

GLUD1 Antibody

Rabbit mAb

Catalog # AP92430

Product Information

Application	WB, IHC, IF, FC, ICC, IHF
Primary Accession	P00367
Reactivity	Rat, Human, Mouse
Clonality	Monoclonal
Other Names	GDH; Gdh-X; GDH1; GLUD; Glud1; Glud1a; Glud1b; Gludl; MRG-2;
Isotype	Rabbit IgG
Host	Rabbit
Calculated MW	61398

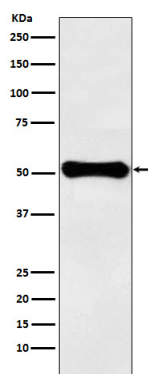
Additional Information

Dilution	WB 1:500~1:2000 IHC 1:50~1:200 ICC/IF 1:50~1:200 FC 1:500
Purification	Affinity-chromatography
Immunogen	A synthesized peptide derived from human GLUD1
Description	May be involved in learning and memory reactions by increasing the turnover of the excitatory neurotransmitter glutamate.
Storage Condition and Buffer	Rabbit IgG in phosphate buffered saline , pH 7.4, 150mM NaCl, 0.02% sodium azide and 50% glycerol. Store at +4°C short term. Store at -20°C long term. Avoid freeze / thaw cycle.

Protein Information

Name	GLUD1
Synonyms	GLUD
Function	Mitochondrial glutamate dehydrogenase that catalyzes the conversion of L-glutamate into alpha-ketoglutarate. Plays a key role in glutamine anaplerosis by producing alpha-ketoglutarate, an important intermediate in the tricarboxylic acid cycle (PubMed: 11032875 , PubMed: 11254391 , PubMed: 16023112 , PubMed: 16959573). Plays a role in insulin homeostasis (PubMed: 11297618 , PubMed: 9571255). May be involved in learning and memory reactions by increasing the turnover of the excitatory neurotransmitter glutamate (By similarity).
Cellular Location	Mitochondrion. Endoplasmic reticulum. Note=Mostly translocates into the mitochondria, only a small amount of the protein localizes to the endoplasmic reticulum.

Images



Western blot analysis of GLUD1 expression in HepG2 cell lysate.

Please note: All products are 'FOR RESEARCH USE ONLY. NOT FOR USE IN DIAGNOSTIC OR THERAPEUTIC PROCEDURES'.