

KIF4A Antibody

Rabbit mAb

Catalog # AP92417

Product Information

Application	WB, FC
Primary Accession	O95239
Reactivity	Human, Mouse
Clonality	Monoclonal
Other Names	Chromokinesin; KIF4; KIF4 G1; KIF4A; KIF4G1;
Isotype	Rabbit IgG
Host	Rabbit
Calculated MW	139881

Additional Information

Dilution	WB 1:500~1:2000 FC 1:100
Purification	Affinity-chromatography
Immunogen	A synthesized peptide derived from human KIF4A
Description	Motor protein that translocates PRC1 to the plus ends of interdigitating spindle microtubules during the metaphase to anaphase transition, an essential step for the formation of an organized central spindle midzone and midbody and for successful cytokinesis.
Storage Condition and Buffer	Rabbit IgG in phosphate buffered saline , pH 7.4, 150mM NaCl, 0.02% sodium azide and 50% glycerol. Store at +4°C short term. Store at -20°C long term. Avoid freeze / thaw cycle.

Protein Information

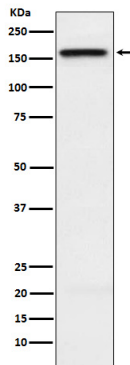
Name	KIF4A
Synonyms	KIF4
Function	Iron-sulfur (Fe-S) cluster binding motor protein that has a role in chromosome segregation during mitosis (PubMed: 29848660). Translocates PRC1 to the plus ends of interdigitating spindle microtubules during the metaphase to anaphase transition, an essential step for the formation of an organized central spindle midzone and midbody and for successful cytokinesis (PubMed: 15297875 , PubMed: 15625105). May play a role in mitotic chromosomal positioning and bipolar spindle stabilization (By similarity).
Cellular Location	Nucleus matrix. Cytoplasm. Cytoplasm, cytoskeleton, spindle Midbody Chromosome. Note=Associates with chromosomes at all stage of mitosis (PubMed:11736643, PubMed:15297875, PubMed:15625105) Chromatin localization is dependent on iron-sulfur cluster binding (PubMed:29848660). In anaphase, associates with the mitotic spindle midzone

(PubMed:15297875). In telophase and cytokinesis, co-localizes with CIAO2B at the spindle midzone and midbody (PubMed:15297875, PubMed:29848660). Co-localizes with PRC1 in early mitosis and at the spindle midzone from anaphase B to telophase (PubMed:15297875, PubMed:15625105). Does not localize to the nucleolus (PubMed:11736643)

Tissue Location

Highly expressed in hematopoietic tissues, fetal liver, spleen, thymus and adult thymus and bone marrow. Lower levels are found in heart, testis, kidney, colon and lung

Images



Western blot analysis of KIF4A expression in HeLa cell lysate.

Please note: All products are 'FOR RESEARCH USE ONLY. NOT FOR USE IN DIAGNOSTIC OR THERAPEUTIC PROCEDURES'.