

ApoH Antibody

Rabbit mAb

Catalog # AP92413

Product Information

Application	WB, IF, ICC, IP
Primary Accession	P02749
Reactivity	Rat, Human
Clonality	Monoclonal
Other Names	APC inhibitor; APOH; Apolipoprotein H; B2G1; B2GP1; B2GPI; BG;
Isotype	Rabbit IgG
Host	Rabbit
Calculated MW	38298

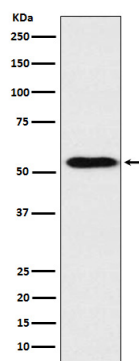
Additional Information

Dilution	WB 1:1000~1:5000 ICC/IF 1:50~1:200 IP 1:50
Purification	Affinity-chromatography
Immunogen	A synthesized peptide derived from human ApoH
Description	Binds to various kinds of negatively charged substances such as heparin, phospholipids, and dextran sulfate. May prevent activation of the intrinsic blood coagulation cascade by binding to phospholipids on the surface of damaged cells.
Storage Condition and Buffer	Rabbit IgG in phosphate buffered saline , pH 7.4, 150mM NaCl, 0.02% sodium azide and 50% glycerol. Store at +4°C short term. Store at -20°C long term. Avoid freeze / thaw cycle.

Protein Information

Name	APOH
Synonyms	B2G1
Function	Binds to various kinds of negatively charged substances such as heparin, phospholipids, and dextran sulfate. May prevent activation of the intrinsic blood coagulation cascade by binding to phospholipids on the surface of damaged cells.
Cellular Location	Secreted.
Tissue Location	Expressed by the liver and secreted in plasma.

Images



Western blot analysis of ApoH expression in Human plasma lysate.

Please note: All products are 'FOR RESEARCH USE ONLY. NOT FOR USE IN DIAGNOSTIC OR THERAPEUTIC PROCEDURES'.