

S1PR3 Antibody

Rabbit mAb

Catalog # AP92407

Product Information

Application	WB
Primary Accession	Q99500
Reactivity	Rat, Human, Mouse
Clonality	Monoclonal
Other Names	EDG3; LPB3; S1P3; S1pr3;
Isotype	Rabbit IgG
Host	Rabbit
Calculated MW	42250

Additional Information

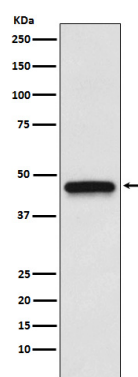
Dilution	WB 1:500~1:2000
Purification	Affinity-chromatography
Immunogen	A synthesized peptide derived from human S1PR3
Description	Receptor for the lysosphingolipid sphingosine 1-phosphate (S1P). S1P is a bioactive lysophospholipid that elicits diverse physiological effect on most types of cells and tissues.
Storage Condition and Buffer	Rabbit IgG in phosphate buffered saline , pH 7.4, 150mM NaCl, 0.02% sodium azide and 50% glycerol. Store at +4°C short term. Store at -20°C long term. Avoid freeze / thaw cycle.

Protein Information

Name	S1PR3 (HGNC:3167)
Function	Receptor for the lysosphingolipid sphingosine 1-phosphate (S1P). S1P is a bioactive lysophospholipid that elicits diverse physiological effect on most types of cells and tissues. When expressed in rat HTC4 hepatoma cells, is capable of mediating S1P-induced cell proliferation and suppression of apoptosis.
Cellular Location	Cell membrane; Multi-pass membrane protein.
Tissue Location	Expressed in all tissues, but most abundantly in heart, placenta, kidney, and liver

Images

Western blot analysis of S1PR3 expression in HepG2 cell



lysate.

Please note: All products are 'FOR RESEARCH USE ONLY. NOT FOR USE IN DIAGNOSTIC OR THERAPEUTIC PROCEDURES'.