

TRAP1 Antibody

Rabbit mAb

Catalog # AP92402

Product Information

Application	WB, IHC, IF, ICC, IHF
Primary Accession	Q12931
Reactivity	Human
Clonality	Monoclonal
Other Names	HSP75; HSP90L; Trap1;
Isotype	Rabbit IgG
Host	Rabbit
Calculated MW	80110

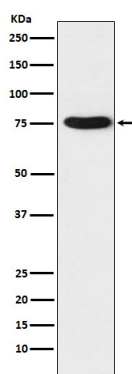
Additional Information

Dilution	WB 1:1000~1:5000 IHC 1:50~1:200 ICC/IF 1:100~1:500
Purification	Affinity-chromatography
Immunogen	A synthesized peptide derived from human TRAP1
Description	Chaperone that expresses an ATPase activity.
Storage Condition and Buffer	Rabbit IgG in phosphate buffered saline , pH 7.4, 150mM NaCl, 0.02% sodium azide and 50% glycerol. Store at +4°C short term. Store at -20°C long term. Avoid freeze / thaw cycle.

Protein Information

Name	TRAP1
Synonyms	HSP75, HSPC5 {ECO:0000303 PubMed:1866360
Function	Chaperone that expresses an ATPase activity. Involved in maintaining mitochondrial function and polarization, downstream of PINK1 and mitochondrial complex I. Is a negative regulator of mitochondrial respiration able to modulate the balance between oxidative phosphorylation and aerobic glycolysis. The impact of TRAP1 on mitochondrial respiration is probably mediated by modulation of mitochondrial SRC and inhibition of SDHA.
Cellular Location	Mitochondrion. Mitochondrion inner membrane Mitochondrion matrix
Tissue Location	Found in skeletal muscle, liver, heart, brain, kidney, pancreas, lung, placenta and bladder. Expression is highly reduced in bladder cancer and renal cell carcinoma specimens compared to healthy tissues, but it is increased in other type of tumors

Images



Western blot analysis of TRAP1 expression in K562 cell lysate.

Please note: All products are 'FOR RESEARCH USE ONLY. NOT FOR USE IN DIAGNOSTIC OR THERAPEUTIC PROCEDURES'.