

Angiotensinogen Antibody

Rabbit mAb

Catalog # AP92398

Product Information

Application	WB, IF, FC, ICC, IP
Primary Accession	P01019
Reactivity	Human
Clonality	Monoclonal
Other Names	AGT; Ang; Ang I; Ang II; Ang III; Angiotensinogen; ANHU; ANRT; AT-2; AT-II; PAT; Pre angiotensinogen; Serpin A8; SERPINA8;
Isotype	Rabbit IgG
Host	Rabbit
Calculated MW	52070

Additional Information

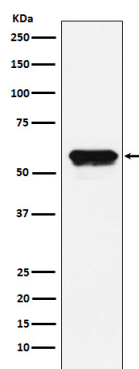
Dilution	WB 1:1000~1:5000 ICC/IF 1:100~1:500 IP 1:50 FC 1:100
Purification	Affinity-chromatography
Immunogen	A synthesized peptide derived from human Angiotensinogen
Description	Essential component of the renin-angiotensin system (RAS), a potent regulator of blood pressure, body fluid and electrolyte homeostasis. In response to lowered blood pressure, the enzyme renin cleaves angiotensinogen to produce angiotensin-1 (angiotensin 1-10).
Storage Condition and Buffer	Rabbit IgG in phosphate buffered saline , pH 7.4, 150mM NaCl, 0.02% sodium azide and 50% glycerol. Store at +4°C short term. Store at -20°C long term. Avoid freeze / thaw cycle.

Protein Information

Name	AGT (HGNC:333)
Synonyms	SERPINA8
Function	Essential component of the renin-angiotensin system (RAS), a potent regulator of blood pressure, body fluid and electrolyte homeostasis.
Cellular Location	Secreted
Tissue Location	Expressed by the liver and secreted in plasma.

Images

Western blot analysis of Angiotensinogen expression in



HepG2 cell lysate.

Please note: All products are 'FOR RESEARCH USE ONLY. NOT FOR USE IN DIAGNOSTIC OR THERAPEUTIC PROCEDURES'.