

TIRAP Antibody

Rabbit mAb

Catalog # AP92382

Product Information

Application	WB
Primary Accession	P58753
Reactivity	Rat, Human, Mouse
Clonality	Monoclonal
Other Names	MAL; Wyatt;
Isotype	Rabbit IgG
Host	Rabbit
Calculated MW	23883

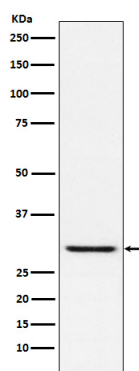
Additional Information

Dilution	WB 1:500~1:2000
Purification	Affinity-chromatography
Immunogen	A synthesized peptide derived from human TIRAP
Description	The Toll-like receptor (TLR) family in mammals comprises a family of transmembrane proteins characterized by multiple copies of leucine rich repeats in the extracellular domain and IL-1 receptor motif in the cytoplasmic domain. Like its counterparts in Drosophila, TLRs signal through adaptor molecules.
Storage Condition and Buffer	Rabbit IgG in phosphate buffered saline , pH 7.4, 150mM NaCl, 0.02% sodium azide and 50% glycerol. Store at +4°C short term. Store at -20°C long term. Avoid freeze / thaw cycle.

Protein Information

Name	TIRAP
Synonyms	MAL
Function	Adapter involved in TLR2, TLR4 and RAGE signaling pathways in the innate immune response. Acts via IRAK2 and TRAF-6, leading to the activation of NF-kappa-B, MAPK1, MAPK3 and JNK, and resulting in cytokine secretion and the inflammatory response. Positively regulates the production of TNF-alpha (TNF) and interleukin-6 (IL6).
Cellular Location	Cytoplasm. Cell membrane. Membrane. Note=Colocalizes with DAB2IP at the plasma membrane
Tissue Location	Highly expressed in liver, kidney, spleen, skeletal muscle and heart. Also detected in peripheral blood leukocytes, lung, placenta, small intestine, thymus, colon and brain

Images



Western blot analysis of TIRAP expression in HUVEC cell lysate.

Please note: All products are 'FOR RESEARCH USE ONLY. NOT FOR USE IN DIAGNOSTIC OR THERAPEUTIC PROCEDURES'.