

# ApoD Antibody

Rabbit mAb

Catalog # AP92378

## Product Information

---

|                          |                        |
|--------------------------|------------------------|
| <b>Application</b>       | WB, IHC                |
| <b>Primary Accession</b> | <a href="#">P05090</a> |
| <b>Reactivity</b>        | Human                  |
| <b>Clonality</b>         | Monoclonal             |
| <b>Other Names</b>       | ApoD; ApolipoproteinD; |
| <b>Isotype</b>           | Rabbit IgG             |
| <b>Host</b>              | Rabbit                 |
| <b>Calculated MW</b>     | 21276                  |

## Additional Information

---

|                                     |   |
|-------------------------------------|---|
| <b>Dilution</b>                     | WB 1:500~1:2000 IHC 1:50~1:200  |
| <b>Purification</b>                 | Affinity-chromatography   |
| <b>Immunogen</b>                    | A synthesized peptide derived from human ApoD   |
| <b>Description</b>                  | APOD occurs in the macromolecular complex with lecithin-cholesterol acyltransferase. It is probably involved in the transport and binding of bilin. Appears to be able to transport a variety of ligands in a number of different contexts. |
| <b>Storage Condition and Buffer</b> | Rabbit IgG in phosphate buffered saline , pH 7.4, 150mM NaCl, 0.02% sodium azide and 50% glycerol. Store at +4°C short term. Store at -20°C long term. Avoid freeze / thaw cycle.   |

## Protein Information

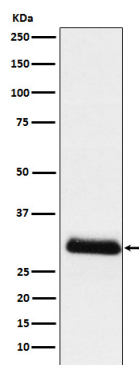
---

|                          |  |
|--------------------------|--|
| <b>Name</b>              | APOD   |
| <b>Function</b>          | APOD occurs in the macromolecular complex with lecithin- cholesterol acyltransferase. It is probably involved in the transport and binding of bilin. Appears to be able to transport a variety of ligands in a number of different contexts. |
| <b>Cellular Location</b> | Secreted.  |
| <b>Tissue Location</b>   | Expressed in liver, intestine, pancreas, kidney, placenta, adrenal, spleen, fetal brain tissue and tears   |

## Images

---

Western blot analysis of ApoD expression in Human



plasma lysate.

Please note: All products are 'FOR RESEARCH USE ONLY. NOT FOR USE IN DIAGNOSTIC OR THERAPEUTIC PROCEDURES'.