

KLRG1 Antibody

Rabbit mAb

Catalog # AP92368

Product Information

Application	WB
Primary Accession	Q96E93
Reactivity	Rat, Human, Mouse
Clonality	Monoclonal
Other Names	2F1 Ag; CLEC15A; KLRG1; MAFA 2F1; MAFA L; MAFA like; MAFAL;
Isotype	Rabbit IgG
Host	Rabbit
Calculated MW	21831

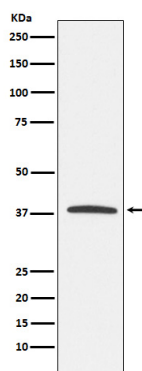
Additional Information

Dilution	WB 1:500~1:2000
Purification	Affinity-chromatography
Immunogen	A synthesized peptide derived from human KLRG1
Description	Plays an inhibitory role on natural killer (NK) cells and T-cell functions upon binding to their non-MHC ligands. May mediate missing self recognition by binding to a highly conserved site on classical cadherins, enabling it to monitor expression of E-cadherin/CDH1, N-cadherin/CDH2 and R-cadherin/CDH4 on target cells.
Storage Condition and Buffer	Rabbit IgG in phosphate buffered saline , pH 7.4, 150mM NaCl, 0.02% sodium azide and 50% glycerol. Store at +4°C short term. Store at -20°C long term. Avoid freeze / thaw cycle.

Protein Information

Name	KLRG1
Synonyms	CLEC15A, MAFA, MAFAL
Function	Plays an inhibitory role on natural killer (NK) cells and T- cell functions upon binding to their non-MHC ligands. May mediate missing self recognition by binding to a highly conserved site on classical cadherins, enabling it to monitor expression of E- cadherin/CDH1, N-cadherin/CDH2 and R-cadherin/CDH4 on target cells.
Cellular Location	Cell membrane; Single-pass type II membrane protein
Tissue Location	Expressed specifically on natural killer (NK) cells and T-cells, mainly CD8 T-cells.

Images



Western blot analysis of KLRG1 expression in Jurkat cell lysate.

Please note: All products are 'FOR RESEARCH USE ONLY. NOT FOR USE IN DIAGNOSTIC OR THERAPEUTIC PROCEDURES'.