

# ASS1 Antibody

Rabbit mAb

Catalog # AP92367

## Product Information

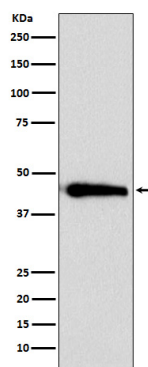
<b>Application</b>	WB, IHC, IF, FC, ICC, IP, IHF
<b>Primary Accession</b>	<a href="#">P00966</a>
<b>Reactivity</b>	Rat, Human, Mouse
<b>Clonality</b>	Monoclonal
<b>Other Names</b>	Argininosuccinate synthase 1; ASS; ass1; ASSA; Citrulline aspartate ligase; CTLN1;
<b>Isotype</b>	Rabbit IgG
<b>Host</b>	Rabbit
<b>Calculated MW</b>	47 KDa

## Additional Information

<b>Dilution</b>	WB 1:500~1:2000 IHC 1:50~1:200 ICC/IF 1:50~1:200 IP 1:50 FC 1:500
<b>Purification</b>	Affinity-chromatography
<b>Immunogen</b>	A synthesized peptide derived from human ASS1
<b>Description</b>	Amino-acid biosynthesis; L-arginine biosynthesis; L-arginine from L-ornithine and carbamoyl phosphate: step 2/3. Nitrogen metabolism; urea cycle; (N(omega)-L-arginino)succinate from L-aspartate and L-citrulline: step 1/1.
<b>Storage Condition and Buffer</b>	Rabbit IgG in phosphate buffered saline , pH 7.4, 150mM NaCl, 0.02% sodium azide and 50% glycerol. Store at +4°C short term. Store at -20°C long term. Avoid freeze / thaw cycle.

## Protein Information

## Images



Western blot analysis of ASS1 expression in HeLa cell lysate.

Please note: All products are 'FOR RESEARCH USE ONLY. NOT FOR USE IN DIAGNOSTIC OR THERAPEUTIC PROCEDURES'.