

LIMPII Antibody

Rabbit mAb

Catalog # AP92365

Product Information

Application	WB, IHC, FC, IP
Primary Accession	Q14108
Reactivity	Rat, Human, Mouse
Clonality	Monoclonal
Other Names	AMRF; CD36; CD36L2; EPM4; HLGP85; LGP85; LIMP2; LIMPII; Scarb2; SRBII;
Isotype	Rabbit IgG
Host	Rabbit
Calculated MW	54290

Additional Information

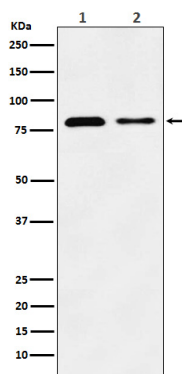
Dilution	WB 1:500~1:2000 IHC 1:50~1:200 IP 1:50 FC 1:50
Purification	Affinity-chromatography
Immunogen	A synthesized peptide derived from human LIMPII
Description	Acts as a lysosomal receptor for glucosylceramidase (GBA) targeting.
Storage Condition and Buffer	Rabbit IgG in phosphate buffered saline , pH 7.4, 150mM NaCl, 0.02% sodium azide and 50% glycerol. Store at +4°C short term. Store at -20°C long term. Avoid freeze / thaw cycle.

Protein Information

Name	SCARB2
Synonyms	CD36L2, LIMP2, LIMPII
Function	Acts as a lysosomal receptor for glucosylceramidase (GBA1) targeting.
Cellular Location	Lysosome membrane; Multi-pass membrane protein

Images

Western blot analysis of LIMPII expression in (1) HeLa cell lysate; (2) Mouse liver lysate.



Please note: All products are 'FOR RESEARCH USE ONLY. NOT FOR USE IN DIAGNOSTIC OR THERAPEUTIC PROCEDURES'.