

# fetal hemoglobin Antibody

Rabbit mAb

Catalog # AP92363

## Product Information

---

<b>Application</b>	WB
<b>Primary Accession</b>	<a href="#">P69891/P69892</a>
<b>Reactivity</b>	Human
<b>Clonality</b>	Monoclonal
<b>Other Names</b>	HBG1; HBG2; HBGA; HBGR; Hemoglobin gamma A; Hemoglobin gamma G; Hemoglobin subunit gamma 1; Hemoglobin subunit gamma 2; HSGGL1; PRO2979;
<b>Isotype</b>	Rabbit IgG
<b>Host</b>	Rabbit
<b>Calculated MW</b>	12 KDa

## Additional Information

---

<b>Dilution</b>	WB 1:500~1:2000
<b>Purification</b>	Affinity-chromatography
<b>Immunogen</b>	A synthesized peptide derived from human fetal hemoglobin
<b>Description</b>	The gamma globin genes (HBG1 and HBG2) are normally expressed in the fetal liver, spleen and bone marrow. Two gamma chains together with two alpha chains constitute fetal hemoglobin (HbF) which is normally replaced by adult hemoglobin (HbA) at birth.
<b>Storage Condition and Buffer</b>	Rabbit IgG in phosphate buffered saline , pH 7.4, 150mM NaCl, 0.02% sodium azide and 50% glycerol. Store at +4°C short term. Store at -20°C long term. Avoid freeze / thaw cycle.

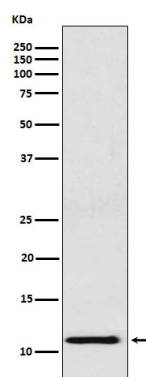
## Protein Information

---

## Images

---

Western blot analysis of fetal hemoglobin expression in K562 cell lysate.



Please note: All products are 'FOR RESEARCH USE ONLY. NOT FOR USE IN DIAGNOSTIC OR THERAPEUTIC PROCEDURES'.