

Angiotensinogen Antibody

Rabbit mAb

Catalog # AP92350

Product Information

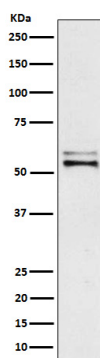
Application	WB, FC, IP
Primary Accession	P01019
Reactivity	Human
Clonality	Monoclonal
Other Names	AGT; Angiotensin I; ANHU; Angiotensinogen; Angiotensin II; SERPINA8; Serpin A8;
Isotype	Rabbit IgG
Host	Rabbit
Calculated MW	53 KDa

Additional Information

Dilution	WB 1:1000~1:5000 IP 1:60 FC 1:50
Purification	Affinity-chromatography
Immunogen	A synthesized peptide derived from human Angiotensinogen
Description	Essential component of the renin-angiotensin system (RAS), a potent regulator of blood pressure, body fluid and electrolyte homeostasis. In response to lowered blood pressure, the enzyme renin cleaves angiotensinogen to produce angiotensin-1 (angiotensin 1-10).
Storage Condition and Buffer	Rabbit IgG in phosphate buffered saline , pH 7.4, 150mM NaCl, 0.02% sodium azide and 50% glycerol. Store at +4°C short term. Store at -20°C long term. Avoid freeze / thaw cycle.

Protein Information

Images



Western blot analysis of Angiotensinogen expression in Human plasma lysate.

Please note: All products are 'FOR RESEARCH USE ONLY. NOT FOR USE IN DIAGNOSTIC OR THERAPEUTIC PROCEDURES'.