

TMPRSS2 Antibody

Rabbit mAb

Catalog # AP92338

Product Information

Application	WB, IHC, IF, FC, ICC, IHF
Primary Accession	O15393
Reactivity	Rat, Human, Mouse
Clonality	Monoclonal
Other Names	Epitheliasin; PRSS10; TMPRSS2;
Isotype	Rabbit IgG
Host	Rabbit
Calculated MW	53859

Additional Information

Dilution	WB 1:500~1:2000 IHC 1:100~1:500 ICC/IF 1:100~1:500 FC 1:60
Purification	Affinity-chromatography
Immunogen	A synthesized peptide derived from human TMPRSS2
Description	Serine protease that proteolytically cleaves and activates the viral spike glycoproteins which facilitate virus-cell membrane fusions; spike proteins are synthesized and maintained in precursor intermediate folding states and proteolysis permits the refolding and energy release required to create stable virus-cell linkages and membrane coalescence.
Storage Condition and Buffer	Rabbit IgG in phosphate buffered saline , pH 7.4, 150mM NaCl, 0.02% sodium azide and 50% glycerol. Store at +4°C short term. Store at -20°C long term. Avoid freeze / thaw cycle.

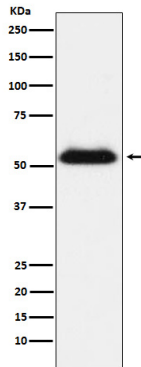
Protein Information

Name	TMPRSS2 (HGNC:11876)
Synonyms	PRSS10
Function	<p>Plasma membrane-anchored serine protease that cleaves at arginine residues (PubMed:32703818, PubMed:35676539, PubMed:37990007, PubMed:38964328). Participates in proteolytic cascades of relevance for the normal physiologic function of the prostate (PubMed:25122198).</p> <p>Androgen-induced TMPRSS2 activates several substrates that include pro-hepatocyte growth factor/HGF, the protease activated receptor-2/F2RL1 or matriptase/ST14 leading to extracellular matrix disruption and metastasis of prostate cancer cells (PubMed:15537383, PubMed:25122198, PubMed:26018085). In addition, activates trigeminal neurons and contribute to both spontaneous pain and mechanical allodynia (By similarity).</p>
Cellular Location	Cell membrane; Single-pass type II membrane protein

Tissue Location

Expressed in several tissues that comprise large populations of epithelial cells with the highest level of transcripts measured in the prostate gland. Expressed in type II pneumocytes in the lung (at protein level). Expressed strongly in small intestine. Also expressed in colon, stomach and salivary gland. Coexpressed with ACE2 within lung type II pneumocytes, ileal absorptive enterocytes, intestinal epithelial cells, cornea, gallbladder and nasal goblet secretory cells (Ref.21). {ECO:0000269|PubMed:11169526, ECO:0000269|PubMed:20382709, ECO:0000269|PubMed:21325420, ECO:0000269|PubMed:32404436, ECO:0000269|Ref.21}

Images



Western blot analysis of TMPRSS2 expression in LNCaP cell lysate.

Please note: All products are 'FOR RESEARCH USE ONLY. NOT FOR USE IN DIAGNOSTIC OR THERAPEUTIC PROCEDURES'.