

CBX4 Antibody

Rabbit mAb

Catalog # AP92320

Product Information

Application	WB
Primary Accession	O00257
Reactivity	Rat, Human, Mouse
Clonality	Monoclonal
Other Names	CBX4; hPc2; NBP16; PC2;
Isotype	Rabbit IgG
Host	Rabbit
Calculated MW	61368

Additional Information

Dilution	WB 1:500~1:2000
Purification	Affinity-chromatography
Immunogen	A synthesized peptide derived from human CBX4
Description	E3 SUMO-protein ligase which facilitates SUMO1 conjugation by UBE2I. Component of the Polycomb group (PcG) multiprotein PRC1 complex, a complex required to maintain the transcriptionally repressive state of many genes, including Hox genes, throughout development.
Storage Condition and Buffer	Rabbit IgG in phosphate buffered saline , pH 7.4, 150mM NaCl, 0.02% sodium azide and 50% glycerol. Store at +4°C short term. Store at -20°C long term. Avoid freeze / thaw cycle.

Protein Information

Name	CBX4
Function	E3 SUMO-protein ligase that catalyzes sumoylation of target proteins by promoting the transfer of SUMO from the E2 enzyme to the substrate (PubMed: 12679040 , PubMed: 22467880 , PubMed: 22825850). Also acts as a histone reader, which specifically recognizes and binds histone H3 trimethylated at 'Lys-9' and 'Lys-27' (H3K9me3 and H3K27me3, respectively) via its chromo domain (By similarity). Catalyzes sumoylation of HNRNPK, a p53/TP53 transcriptional coactivator, hence indirectly regulates p53/TP53 transcriptional activation resulting in p21/CDKN1A expression (PubMed: 22825850). Acts as a regulator of brown adipocyte differentiation by mediating sumoylation of PRDM16, thereby preventing PRDM16 ubiquitination and degradation (By similarity). Monosumoylates ZNF131 (PubMed: 22467880). Component of a Polycomb group (PcG) multiprotein PRC1-like complex, a complex class required to maintain the transcriptionally repressive state of many genes, including Hox genes, throughout development (PubMed: 12167701 , PubMed: 19636380 , PubMed: 21282530).

PcG PRC1 complex acts via chromatin remodeling and modification of histones; it mediates monoubiquitination of histone H2A 'Lys-119', rendering chromatin heritably changed in its expressibility (PubMed:[12167701](#), PubMed:[19636380](#), PubMed:[21282530](#)). Plays a role in the lineage differentiation of the germ layers in embryonic development (By similarity).

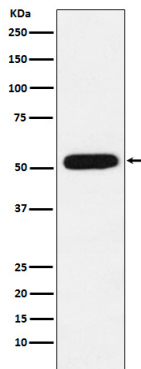
Cellular Location

Nucleus. Nucleus speckle. Note=Localization to nuclear polycomb bodies is required for ZNF131 sumoylation (PubMed:22467880). Localized in distinct foci on chromatin (PubMed:18927235)

Tissue Location

Ubiquitous.

Images



Western blot analysis of CBX4 expression in 293T cell lysate.

Please note: All products are 'FOR RESEARCH USE ONLY. NOT FOR USE IN DIAGNOSTIC OR THERAPEUTIC PROCEDURES'.