

DLAT Antibody

Rabbit mAb

Catalog # AP92313

Product Information

| | |
|--------------------------|-----------------------------|
| Application | WB, IF, FC, ICC, IP |
| Primary Accession | P10515 |
| Reactivity | Rat, Human, Mouse |
| Clonality | Monoclonal |
| Other Names | DLAT; DLTA; E2; PBC; PDCE2; |
| Isotype | Rabbit IgG |
| Host | Rabbit |
| Calculated MW | 68997 |

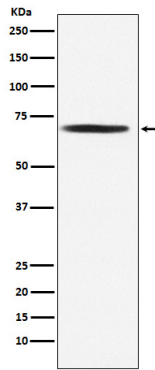
Additional Information

| | |
|-------------------------------------|---|
| Dilution | WB 1:500~1:2000 ICC/IF 1:50~1:200 IP 1:50 FC 1:50 |
| Purification | Affinity-chromatography |
| Immunogen | A synthesized peptide derived from human DLAT |
| Description | The pyruvate dehydrogenase complex catalyzes the overall conversion of pyruvate to acetyl-CoA and CO ₂ . It contains multiple copies of three enzymatic components: pyruvate dehydrogenase (E1), dihydrolipoamide acetyltransferase (E2) and lipoamide dehydrogenase (E3). |
| Storage Condition and Buffer | Rabbit IgG in phosphate buffered saline , pH 7.4, 150mM NaCl, 0.02% sodium azide and 50% glycerol. Store at +4°C short term. Store at -20°C long term. Avoid freeze / thaw cycle. |

Protein Information

| | |
|--------------------------|---|
| Name | DLAT (HGNC:2896) |
| Synonyms | DLTA |
| Function | The pyruvate dehydrogenase (PDH) complex, catalyzes the overall conversion of pyruvate to acetyl-CoA and CO ₂ , and thereby links cytoplasmic glycolysis and the mitochondrial tricarboxylic acid (TCA) cycle (Probable). It contains multiple copies of three enzymatic components: pyruvate dehydrogenase (E1), dihydrolipoamide acetyltransferase (E2) and dihydrolipoamide dehydrogenase (E3); (Probable). Within this complex, the catalytic function of this enzyme is to accept, and to transfer to coenzyme A, acetyl groups from acetyl- lipoyl moiety generated by the pyruvate dehydrogenase, leading to acetyl-CoA formation (Probable). |
| Cellular Location | Mitochondrion matrix {ECO:0000250 UniProtKB:P08461} |

Images



Western blot analysis of DLAT expression in Jurkat cell lysate.

Please note: All products are 'FOR RESEARCH USE ONLY. NOT FOR USE IN DIAGNOSTIC OR THERAPEUTIC PROCEDURES'.