

HLTF Antibody

Rabbit mAb

Catalog # AP92309

Product Information

Application	WB, IHC, IF, ICC, IHF
Primary Accession	Q14527
Reactivity	Rat, Human
Clonality	Monoclonal
Other Names	HIP116; HIP116A; HLTF 1; Hltf; HLTF1; p113; RNF80; SMARC A3; SMARCA 3; SMARCA3; SNF2L3; ZBU1;
Isotype	Rabbit IgG
Host	Rabbit
Calculated MW	113929

Additional Information

Dilution	WB 1:1000~1:5000 IHC 1:50~1:200 ICC/IF 1:50~1:200
Purification	Affinity-chromatography
Immunogen	A synthesized peptide derived from human HLTF
Description	Has both helicase and E3 ubiquitin ligase activities. Possesses intrinsic ATP-dependent nucleosome-remodeling activity; This activity may be required for transcriptional activation or repression of specific target promoters (By similarity).
Storage Condition and Buffer	Rabbit IgG in phosphate buffered saline , pH 7.4, 150mM NaCl, 0.02% sodium azide and 50% glycerol. Store at +4°C short term. Store at -20°C long term. Avoid freeze / thaw cycle.

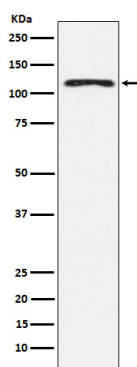
Protein Information

Name	HLTF
Synonyms	HIP116A, RNF80, SMARCA3, SNF2L3, ZBU1
Function	Has both helicase and E3 ubiquitin ligase activities. Possesses intrinsic ATP-dependent nucleosome-remodeling activity; This activity may be required for transcriptional activation or repression of specific target promoters (By similarity). These may include the SERPINE1 and HIV-1 promoters and the SV40 enhancer, to which this protein can bind directly. Plays a role in error-free postreplication repair (PRR) of damaged DNA and maintains genomic stability through acting as a ubiquitin ligase for 'Lys-63'-linked polyubiquitination of chromatin-bound PCNA.
Cellular Location	Cytoplasm. Nucleus. Nucleus, nucleolus Nucleus, nucleoplasm. Note=Nuclear localization is stimulated by progesterone.

Tissue Location

Expressed in brain, heart, kidney, liver, lung, pancreas, placenta and skeletal muscle.

Images



Western blot analysis of HLTF expression in K562 cell lysate.

Please note: All products are 'FOR RESEARCH USE ONLY. NOT FOR USE IN DIAGNOSTIC OR THERAPEUTIC PROCEDURES'.