

CRABP1 Antibody

Rabbit mAb

Catalog # AP92306

Product Information

Application	WB, IP
Primary Accession	P29762
Reactivity	Human, Mouse
Clonality	Monoclonal
Other Names	CRABP; Crabp1; CRABPI; RBP5;
Isotype	Rabbit IgG
Host	Rabbit
Calculated MW	15566

Additional Information

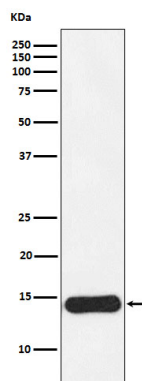
Dilution	WB 1:500~1:2000 IP 1:50
Purification	Affinity-chromatography
Immunogen	A synthesized peptide derived from human CRABP1
Description	Cytosolic CRABPs may regulate the access of retinoic acid to the nuclear retinoic acid receptors.
Storage Condition and Buffer	Rabbit IgG in phosphate buffered saline , pH 7.4, 150mM NaCl, 0.02% sodium azide and 50% glycerol. Store at +4°C short term. Store at -20°C long term. Avoid freeze / thaw cycle.

Protein Information

Name	CRABP1
Synonyms	RBP5
Function	Cytosolic CRABPs may regulate the access of retinoic acid to the nuclear retinoic acid receptors.
Cellular Location	Cytoplasm.

Images

Western blot analysis of CRABP1 expression in MCF7 cell lysate.



Please note: All products are 'FOR RESEARCH USE ONLY. NOT FOR USE IN DIAGNOSTIC OR THERAPEUTIC PROCEDURES'.