

# REA Antibody

Rabbit mAb

Catalog # AP92304

## Product Information

<b>Application</b>	WB, IHC, IF, ICC, IHF
<b>Primary Accession</b>	<a href="#">Q99623</a>
<b>Reactivity</b>	Rat, Human, Mouse
<b>Clonality</b>	Monoclonal
<b>Other Names</b>	BAP; Bap37; BCAP 37; D prohibitin; p22; Phb2; PNAS 141; Prohibitin 2;
<b>Isotype</b>	Rabbit IgG
<b>Host</b>	Rabbit
<b>Calculated MW</b>	33296

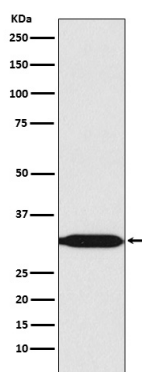
## Additional Information

<b>Dilution</b>	WB 1:1000~1:5000 IHC 1:50~1:200 ICC/IF 1:50~1:200
<b>Purification</b>	Affinity-chromatography
<b>Immunogen</b>	A synthesized peptide derived from human REA
<b>Description</b>	Acts as a mediator of transcriptional repression by nuclear hormone receptors via recruitment of histone deacetylases (By similarity). Functions as an estrogen receptor (ER)-selective coregulator that potentiates the inhibitory activities of antiestrogens and represses the activity of estrogens.
<b>Storage Condition and Buffer</b>	Rabbit IgG in phosphate buffered saline , pH 7.4, 150mM NaCl, 0.02% sodium azide and 50% glycerol. Store at +4°C short term. Store at -20°C long term. Avoid freeze / thaw cycle.

## Protein Information

<b>Name</b>	PHB2 {ECO:0000312 EMBL:AAH14766.1, ECO:0000312 HGNC:HGNC:30306}
<b>Function</b>	Protein with pleiotropic attributes mediated in a cell- compartment- and tissue-specific manner, which include the plasma membrane-associated cell signaling functions, mitochondrial chaperone, and transcriptional co-regulator of transcription factors and sex steroid hormones in the nucleus.
<b>Cellular Location</b>	Mitochondrion inner membrane. Cytoplasm. Nucleus. Cell membrane Note=Localizes within both nucleus and cytoplasm in proliferative primary myoblasts and mostly within the nucleus of differentiated primary myoblasts. [Isoform 2]: Mitochondrion inner membrane
<b>Tissue Location</b>	Expressed in myoblasts.

## Images



Western blot analysis of REA expression in HeLa cell lysate.

Please note: All products are 'FOR RESEARCH USE ONLY. NOT FOR USE IN DIAGNOSTIC OR THERAPEUTIC PROCEDURES'.