

CDKN2C Antibody

Rabbit mAb
Catalog # AP92303

Product Information

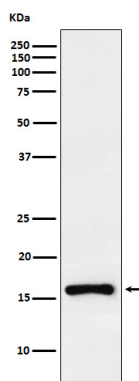
Application	WB, IHC, IF, ICC, IP, IHF
Primary Accession	P42773
Reactivity	Rat, Human, Mouse
Clonality	Monoclonal
Other Names	Cdkn2c; CDKN6; INK4C; p18; p18 inhibits CDK4; p18 INK4c; p18 INK6; p18-INK4c; p18-INK6;
Isotype	Rabbit IgG
Host	Rabbit
Calculated MW	15 KDa

Additional Information

Dilution	WB 1:500~1:2000 IHC 1:50~1:200 ICC/IF 1:50~1:200 IP 1:40
Purification	Affinity-chromatography
Immunogen	A synthesized peptide derived from human CDKN2C
Description	Interacts strongly with CDK6, weakly with CDK4. Inhibits cell growth and proliferation with a correlated dependence on endogenous retinoblastoma protein RB.
Storage Condition and Buffer	Rabbit IgG in phosphate buffered saline , pH 7.4, 150mM NaCl, 0.02% sodium azide and 50% glycerol. Store at +4°C short term. Store at -20°C long term. Avoid freeze / thaw cycle.

Protein Information

Images



Western blot analysis of CDKN2C expression in Ramos cell lysate.

Please note: All products are 'FOR RESEARCH USE ONLY. NOT FOR USE IN DIAGNOSTIC OR THERAPEUTIC PROCEDURES'.