

CBX2 Antibody

Rabbit mAb

Catalog # AP92280

Product Information

Application	WB, FC
Primary Accession	Q14781
Reactivity	Rat, Human, Mouse
Clonality	Monoclonal
Other Names	CBX2; CDCA6; M33 polycomb like; MOD2; Modifier3; Polycomb; SRXY5;
Isotype	Rabbit IgG
Host	Rabbit
Calculated MW	56081

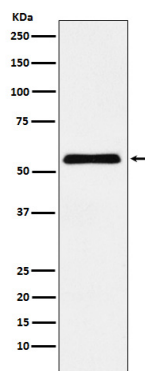
Additional Information

Dilution	WB 1:1000~1:5000 FC 1:150
Purification	Affinity-chromatography
Immunogen	A synthesized peptide derived from human CBX2
Description	Component of the Polycomb group (PcG) multiprotein PRC1 complex, a complex required to maintain the transcriptionally repressive state of many genes, including Hox genes, throughout development.
Storage Condition and Buffer	Rabbit IgG in phosphate buffered saline , pH 7.4, 150mM NaCl, 0.02% sodium azide and 50% glycerol. Store at +4°C short term. Store at -20°C long term. Avoid freeze / thaw cycle.

Protein Information

Name	CBX2
Function	Component of a Polycomb group (PcG) multiprotein PRC1-like complex, a complex class required to maintain the transcriptionally repressive state of many genes, including Hox genes, throughout development (PubMed: 21282530). PcG PRC1 complex acts via chromatin remodeling and modification of histones; it mediates monoubiquitination of histone H2A 'Lys-119', rendering chromatin heritably changed in its expressibility (PubMed: 21282530). Binds to histone H3 trimethylated at 'Lys-9' (H3K9me3) or at 'Lys-27' (H3K27me3) (By similarity). Plays a role in the lineage differentiation of the germ layers in embryonic development (By similarity). Involved in sexual development, acting as activator of NR5A1 expression (PubMed: 19361780).
Cellular Location	Nucleus. Chromosome Note=Localized in distinct foci on chromatin and in chromocenters Localizes to the inactive X chromosome. Seems to be recruited to H3K27me3, H3K9ac and H3K3me2 sites on chromatin

Images



Western blot analysis of CBX2 expression in HeLa cell lysate.

Please note: All products are 'FOR RESEARCH USE ONLY. NOT FOR USE IN DIAGNOSTIC OR THERAPEUTIC PROCEDURES'.