

# Calpain S1 Antibody

Rabbit mAb

Catalog # AP92278

## Product Information

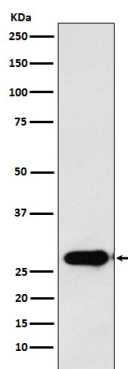
|                          |   |
|--------------------------|---|
| <b>Application</b>       | WB, IHC, IF, FC, ICC, IHF   |
| <b>Primary Accession</b> | <a href="#">P04632</a>  |
| <b>Reactivity</b>        | Rat, Human, Mouse   |
| <b>Clonality</b>         | Monoclonal  |
| <b>Other Names</b>       | Calpain4; CalpainS1; CANP; CANPS; CAPN 4; CAPN S1; CAPN4; CAPNS 1; CAPNS; Capns1; CDPS; CSS1; |
| <b>Isotype</b>           | Rabbit IgG  |
| <b>Host</b>              | Rabbit  |
| <b>Calculated MW</b>     | 28 KDa  |

## Additional Information

|                                     |   |
|-------------------------------------|---|
| <b>Dilution</b>                     | WB 1:500~1:2000 IHC 1:50~1:200 ICC/IF 1:50~1:200 FC 1:50  |
| <b>Purification</b>                 | Affinity-chromatography   |
| <b>Immunogen</b>                    | A synthesized peptide derived from human Calpain S1   |
| <b>Description</b>                  | Regulatory subunit of the calcium-regulated non-lysosomal thiol-protease which catalyzes limited proteolysis of substrates involved in cytoskeletal remodeling and signal transduction. |
| <b>Storage Condition and Buffer</b> | Rabbit IgG in phosphate buffered saline , pH 7.4, 150mM NaCl, 0.02% sodium azide and 50% glycerol. Store at +4°C short term. Store at -20°C long term. Avoid freeze / thaw cycle.       |

## Protein Information

## Images



Western blot analysis of Calpain S1 expression in T47D cell lysate.

Please note: All products are 'FOR RESEARCH USE ONLY. NOT FOR USE IN DIAGNOSTIC OR THERAPEUTIC PROCEDURES'.