

# Desmoplakin Antibody

Rabbit mAb

Catalog # AP92253

## Product Information

<b>Application</b>	WB, IF, FC, ICC
<b>Primary Accession</b>	<a href="#">P15924</a>
<b>Reactivity</b>	Rat, Human
<b>Clonality</b>	Monoclonal
<b>Other Names</b>	Desmoplakin I; Desmoplakin II; DPI; DPII; DSP; KPPS2; PPKS2;
<b>Isotype</b>	Rabbit IgG
<b>Host</b>	Rabbit
<b>Calculated MW</b>	331774

## Additional Information

<b>Dilution</b>	WB 1:500~1:2000 ICC/IF 1:50~1:200 FC 1:50
<b>Purification</b>	Affinity-chromatography
<b>Immunogen</b>	A synthesized peptide derived from human Desmoplakin
<b>Description</b>	Major high molecular weight protein of desmosomes. Involved in the organization of the desmosomal cadherin-plakoglobin complexes into discrete plasma membrane domains and in the anchoring of intermediate filaments to the desmosomes.
<b>Storage Condition and Buffer</b>	Rabbit IgG in phosphate buffered saline , pH 7.4, 150mM NaCl, 0.02% sodium azide and 50% glycerol. Store at +4°C short term. Store at -20°C long term. Avoid freeze / thaw cycle.

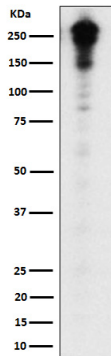
## Protein Information

<b>Name</b>	DSP
<b>Function</b>	Major high molecular weight protein of desmosomes. Regulates profibrotic gene expression in cardiomyocytes via activation of the MAPK14/p38 MAPK signaling cascade and increase in TGFB1 protein abundance (By similarity).
<b>Cellular Location</b>	Cell junction, desmosome. Cell membrane {ECO:0000250 UniProtKB:E9Q557}. Cytoplasm. Note=Localizes to desmosome precursor particles in the cytoplasm (PubMed:25208567). Localizes to the cytoplasm in undifferentiated keratinocytes however becomes localizes to both lateral and tricellular cell-cell contacts as differentiation progresses and as epithelial sheet formation completes (By similarity) {ECO:0000250 UniProtKB:E9Q557, ECO:0000269 PubMed:25208567}
<b>Tissue Location</b>	Expressed in oral mucosa (at protein level) (PubMed:30479852). Expressed in arrector pili muscle (at protein level) (PubMed:29034528). Expressed in the heart in the heart (at protein level) (PubMed:18662195). [Isoform DPII]:

Resides predominantly in tissues and cells of stratified origin

## Images

---



Western blot analysis of Desmoplakin expression in A431 cell lysate.

Please note: All products are 'FOR RESEARCH USE ONLY. NOT FOR USE IN DIAGNOSTIC OR THERAPEUTIC PROCEDURES'.