

CD239 Antibody

Rabbit mAb

Catalog # AP92250

Product Information

Application	WB, IHC, FC, IP
Primary Accession	P50895
Reactivity	Rat, Human, Mouse
Clonality	Monoclonal
Other Names	Bcam; CD239; Lutheran; MSK19;
Isotype	Rabbit IgG
Host	Rabbit
Calculated MW	67405

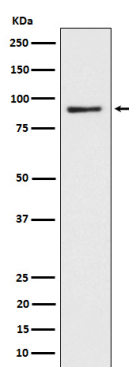
Additional Information

Dilution	WB 1:500~1:2000 IHC 1:50~1:200 IP 1:50 FC 1:50
Purification	Affinity-chromatography
Immunogen	A synthesized peptide derived from human CD239
Description	Laminin alpha-5 receptor. May mediate intracellular signaling.
Storage Condition and Buffer	Rabbit IgG in phosphate buffered saline , pH 7.4, 150mM NaCl, 0.02% sodium azide and 50% glycerol. Store at +4°C short term. Store at -20°C long term. Avoid freeze / thaw cycle.

Protein Information

Name	BCAM
Synonyms	LU, MSK19
Function	Transmembrane glycoprotein that functions as both a receptor and an adhesion molecule playing a crucial role in cell adhesion, motility, migration and invasion (PubMed: 9616226 , PubMed: 31413112). Extracellular domain enables binding to extracellular matrix proteins, such as laminin, integrin and other ligands while its intracellular domain interacts with cytoskeletal proteins like hemoglobin, facilitating cell signal transduction (PubMed: 17158232). Serves as a receptor for laminin alpha-5/LAMA5 to promote cell adhesion (PubMed: 15975931). Mechanistically, JAK2 induces BCAM phosphorylation and activates its adhesion to laminin by stimulating a Rap1/AKT signaling pathway in the absence of EPOR (PubMed: 23160466).
Cellular Location	Cell membrane; Single-pass type I membrane protein
Tissue Location	Wide tissue distribution (highest in the pancreas and very low in brain). Closely associated with the basal layer of cells in epithelia and the endothelium of blood vessel walls

Images



Western blot analysis of CD239 expression in HepG2 cell lysate.

Please note: All products are 'FOR RESEARCH USE ONLY. NOT FOR USE IN DIAGNOSTIC OR THERAPEUTIC PROCEDURES'.