

FANCA Antibody

Rabbit mAb

Catalog # AP92231

Product Information

| | |
|--------------------------|--|
| Application | WB, IP |
| Primary Accession | O15360 |
| Reactivity | Human |
| Clonality | Monoclonal |
| Other Names | FA 1; FA; FA H; FA1; FAA; FACA; FAH; Fanca; FANCH; |
| Isotype | Rabbit IgG |
| Host | Rabbit |
| Calculated MW | 162775 |

Additional Information

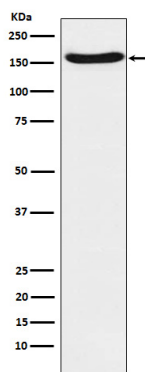
| | |
|-------------------------------------|--|
| Dilution | WB 1:500~1:1000 IP 1:40 |
| Purification | Affinity-chromatography |
| Immunogen | A synthesized peptide derived from human FANCA |
| Description | DNA repair protein that may operate in a postreplication repair or a cell cycle checkpoint function. May be involved in interstrand DNA cross-link repair and in the maintenance of normal chromosome stability. |
| Storage Condition and Buffer | Rabbit IgG in phosphate buffered saline , pH 7.4, 150mM NaCl, 0.02% sodium azide and 50% glycerol. Store at +4°C short term. Store at -20°C long term. Avoid freeze / thaw cycle. |

Protein Information

| | |
|--------------------------|--|
| Name | FANCA |
| Synonyms | FAA, FACA, FANCH |
| Function | DNA repair protein that may operate in a postreplication repair or a cell cycle checkpoint function. May be involved in interstrand DNA cross-link repair and in the maintenance of normal chromosome stability. |
| Cellular Location | Nucleus. Cytoplasm. Note=The major form is nuclear. The minor form is cytoplasmic |

Images

Western blot analysis of FANCA expression in A431 cell lysate.



Please note: All products are 'FOR RESEARCH USE ONLY. NOT FOR USE IN DIAGNOSTIC OR THERAPEUTIC PROCEDURES'.