

Cripto1 Antibody

Rabbit mAb

Catalog # AP92190

Product Information

Application	WB, IF, FC, ICC, IP
Primary Accession	P13385
Reactivity	Human
Clonality	Monoclonal
Other Names	CRGF; Cripto 1; cripto; Cripto1 growth factor; TDGF1;
Isotype	Rabbit IgG
Host	Rabbit
Calculated MW	21169

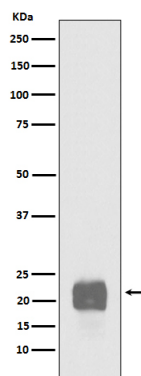
Additional Information

Dilution	WB 1:500~1:2000 ICC/IF 1:50~1:200 IP 1:50 FC 1:50
Purification	Affinity-chromatography
Immunogen	A synthesized peptide derived from human Cripto1
Description	Could play a role in the determination of the epiblastic cells that subsequently give rise to the mesoderm.
Storage Condition and Buffer	Rabbit IgG in phosphate buffered saline , pH 7.4, 150mM NaCl, 0.02% sodium azide and 50% glycerol. Store at +4°C short term. Store at -20°C long term. Avoid freeze / thaw cycle.

Protein Information

Name	CRIPTO {ECO:0000303 PubMed:2792079, ECO:0000312 HGNC:HGNC:11701}
Function	GPI-anchored cell membrane protein involved in Nodal signaling. Cell-associated CRIPTO acts as a Nodal coreceptor in cis. Shedding of CRIPTO by TMEM8A modulates Nodal signaling by allowing soluble CRIPTO to act as a Nodal coreceptor on other cells (PubMed: 27881714). Could play a role in the determination of the epiblastic cells that subsequently give rise to the mesoderm (PubMed: 11909953).
Cellular Location	Cell membrane; Lipid-anchor, GPI-anchor. Secreted. Note=Released from the cell membrane by GPI cleavage.
Tissue Location	Preferentially expressed in gastric and colorectal carcinomas than in their normal counterparts. Expressed in breast and lung.

Images



Western blot analysis of Cripto1 expression in NCCIT cell lysate.

Please note: All products are 'FOR RESEARCH USE ONLY. NOT FOR USE IN DIAGNOSTIC OR THERAPEUTIC PROCEDURES'.