

# MAD3 Antibody

Rabbit mAb

Catalog # AP92185

## Product Information

<b>Application</b>	WB, IHC, FC
<b>Primary Accession</b>	<a href="#">Q9BW11</a>
<b>Reactivity</b>	Rat, Human, Mouse
<b>Clonality</b>	Monoclonal
<b>Other Names</b>	bHLHc13; mxd3; Myx;
<b>Isotype</b>	Rabbit IgG
<b>Host</b>	Rabbit
<b>Calculated MW</b>	23477

## Additional Information

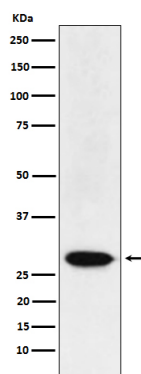
<b>Dilution</b>	WB 1:500~1:2000 IHC 1:50~1:200 FC 1:50
<b>Purification</b>	Affinity-chromatography
<b>Immunogen</b>	A synthesized peptide derived from human MAD3
<b>Description</b>	Transcriptional repressor. Binds with MAX to form a sequence-specific DNA-binding protein complex which recognizes the core sequence 5'-CAC[GA]TG-3'. Antagonizes MYC transcriptional activity by competing for MAX and suppresses MYC dependent cell transformation.
<b>Storage Condition and Buffer</b>	Rabbit IgG in phosphate buffered saline , pH 7.4, 150mM NaCl, 0.02% sodium azide and 50% glycerol. Store at +4°C short term. Store at -20°C long term. Avoid freeze / thaw cycle.

## Protein Information

<b>Name</b>	MXD3
<b>Synonyms</b>	BHLHC13, MAD3
<b>Function</b>	Transcriptional repressor. Binds with MAX to form a sequence- specific DNA-binding protein complex which recognizes the core sequence 5'-CAC[GA]TG-3'. Antagonizes MYC transcriptional activity by competing for MAX and suppresses MYC dependent cell transformation (By similarity).
<b>Cellular Location</b>	Nucleus {ECO:0000255   PROSITE-ProRule:PRU00981}.

## Images

Western blot analysis of MAD3 expression in HeLa cell lysate.



Please note: All products are 'FOR RESEARCH USE ONLY. NOT FOR USE IN DIAGNOSTIC OR THERAPEUTIC PROCEDURES'.