

# ENTPD5 Antibody

Rabbit mAb

Catalog # AP92179

## Product Information

---

<b>Application</b>	WB
<b>Primary Accession</b>	<a href="#">O75356</a>
<b>Reactivity</b>	Rat, Human, Mouse
<b>Clonality</b>	Monoclonal
<b>Other Names</b>	CD39L4; Entpd5; mNTPase; NTPDase 5; PCPH;
<b>Isotype</b>	Rabbit IgG
<b>Host</b>	Rabbit
<b>Calculated MW</b>	47 KDa

## Additional Information

---

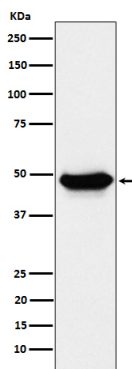
<b>Dilution</b>	WB 1:500~1:2000
<b>Purification</b>	Affinity-chromatography
<b>Immunogen</b>	A synthesized peptide derived from human ENTPD5
<b>Description</b>	Uridine diphosphatase (UDPase) that promotes protein N-glycosylation and ATP level regulation. UDP hydrolysis promotes protein N-glycosylation and folding in the endoplasmic reticulum, as well as elevated ATP consumption in the cytosol via an ATP hydrolysis cycle.
<b>Storage Condition and Buffer</b>	Rabbit IgG in phosphate buffered saline , pH 7.4, 150mM NaCl, 0.02% sodium azide and 50% glycerol. Store at +4°C short term. Store at -20°C long term. Avoid freeze / thaw cycle.

## Protein Information

---

## Images

---



Western blot analysis of ENTPD5 expression in LnCaP cell lysate.

Please note: All products are 'FOR RESEARCH USE ONLY. NOT FOR USE IN DIAGNOSTIC OR THERAPEUTIC PROCEDURES'.