

SAA4 Antibody

Rabbit mAb

Catalog # AP92178

Product Information

Application	WB, IHC, IF, FC, ICC, IHF
Primary Accession	P35542
Reactivity	Human
Clonality	Monoclonal
Other Names	CSAA; Saa4;
Isotype	Rabbit IgG
Host	Rabbit
Calculated MW	14747

Additional Information

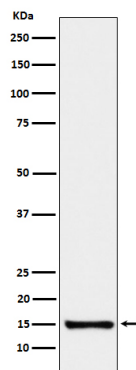
Dilution	WB 1:500~1:2000 IHC 1:50~1:200 ICC/IF 1:50~1:200 FC 1:50
Purification	Affinity-chromatography
Immunogen	A synthesized peptide derived from human SAA4
Description	Major acute phase reactant. Apolipoprotein of the HDL complex.
Storage Condition and Buffer	Rabbit IgG in phosphate buffered saline , pH 7.4, 150mM NaCl, 0.02% sodium azide and 50% glycerol. Store at +4°C short term. Store at -20°C long term. Avoid freeze / thaw cycle.

Protein Information

Name	SAA4 {ECO:0000303 PubMed:7686132, ECO:0000312 HGNC:HGNC:10516}
Function	Major acute phase reactant.
Cellular Location	Secreted {ECO:0000250 UniProtKB:PODJI8}.
Tissue Location	Expressed by the liver; secreted in plasma.

Images

Western blot analysis of SAA4 expression in Human plasma cell lysate.



Please note: All products are 'FOR RESEARCH USE ONLY. NOT FOR USE IN DIAGNOSTIC OR THERAPEUTIC PROCEDURES'.