

# Placental Protein 14 / PAEP Antibody

Rabbit mAb

Catalog # AP92170

## Product Information

<b>Application</b>	WB
<b>Primary Accession</b>	<a href="#">P09466</a>
<b>Reactivity</b>	Human
<b>Clonality</b>	Monoclonal
<b>Other Names</b>	GdA; GdF; GdS; Glycodelin A; Glycodelin; Glycodelin F; Glycodelin S; PAEG; PAEP; PEG; PEP; Placental protein 14; PP14;
<b>Isotype</b>	Rabbit IgG
<b>Host</b>	Rabbit
<b>Calculated MW</b>	20624

## Additional Information

<b>Dilution</b>	WB 1:500~1:2000
<b>Purification</b>	Affinity-chromatography
<b>Immunogen</b>	A synthesized peptide derived from human Placental Protein 14 / PAEP
<b>Description</b>	This protein is, quantitatively, the main protein synthesized and secreted in the endometrium from mid-luteal phase of the menstrual cycle and during the first semester of pregnancy.
<b>Storage Condition and Buffer</b>	Rabbit IgG in phosphate buffered saline , pH 7.4, 150mM NaCl, 0.02% sodium azide and 50% glycerol. Store at +4°C short term. Store at -20°C long term. Avoid freeze / thaw cycle.

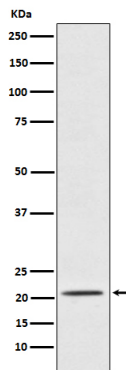
## Protein Information

<b>Name</b>	PAEP
<b>Function</b>	Glycoprotein that regulates critical steps during fertilization and also has immunomodulatory effects. Four glycoforms, namely glycodelin-S, -A, -F and -C have been identified in reproductive tissues that differ in glycosylation and biological activity. Glycodelin-A has contraceptive and immunosuppressive activities (PubMed: <a href="#">7531163</a> , PubMed: <a href="#">9918684</a> ). Glycodelin-C stimulates binding of spermatozoa to the zona pellucida (PubMed: <a href="#">17192260</a> ). Glycodelin-F inhibits spermatozoa-zona pellucida binding and significantly suppresses progesterone-induced acrosome reaction of spermatozoa (PubMed: <a href="#">12672671</a> ). Glycodelin-S in seminal plasma maintains the uncapacitated state of human spermatozoa (PubMed: <a href="#">15883155</a> ).
<b>Cellular Location</b>	Secreted
<b>Tissue Location</b>	This protein is, the main protein synthesized and secreted in the

endometrium from mid-luteal phase of the menstrual cycle and during the first semester of pregnancy (PubMed:3667877). Glycodelin-A is expressed in amniotic fluid, endometrium/decidua and maternal serum (at protein level) (PubMed:3194393). Glycodelin-F is expressed in follicular fluid, luteinized granulosa cells and the oviduct (at protein level) (PubMed:12672671). Glycodelin-S is expressed in seminal plasma and seminal vesicles (at protein level) (PubMed:9239694). Glycodelin-C is detected in cumulus cells (at protein level), but cumulus cells do not synthesize Glycodelin-C but take up and convert glycodelin-A and -F via glycan remodeling (PubMed:17192260).

## Images

---



Western blot analysis of Placental Protein 14 / PAEP expression in TPA-treated K562 cell lysate.

Please note: All products are 'FOR RESEARCH USE ONLY. NOT FOR USE IN DIAGNOSTIC OR THERAPEUTIC PROCEDURES'.