

# MMP1 Antibody

Rabbit mAb

Catalog # AP92156

## Product Information

---

<b>Application</b>	WB, IP
<b>Primary Accession</b>	<a href="#">P03956</a>
<b>Reactivity</b>	Human
<b>Clonality</b>	Monoclonal
<b>Other Names</b>	CLG; CLGN; MMP1;
<b>Isotype</b>	Rabbit IgG
<b>Host</b>	Rabbit
<b>Calculated MW</b>	54007

## Additional Information

---

<b>Dilution</b>	WB 1:500~1:2000 IP 1:50
<b>Purification</b>	Affinity-chromatography
<b>Immunogen</b>	A synthesized peptide derived from human MMP1
<b>Description</b>	Cleaves collagens of types I, II, and III at one site in the helical domain. Also cleaves collagens of types VII and X. In case of HIV infection, interacts and cleaves the secreted viral Tat protein, leading to a decrease in neuronal Tat's mediated neurotoxicity.
<b>Storage Condition and Buffer</b>	Rabbit IgG in phosphate buffered saline , pH 7.4, 150mM NaCl, 0.02% sodium azide and 50% glycerol. Store at +4°C short term. Store at -20°C long term. Avoid freeze / thaw cycle.

## Protein Information

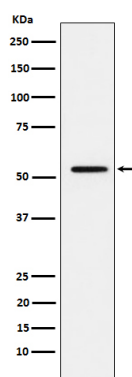
---

<b>Name</b>	MMP1
<b>Synonyms</b>	CLG
<b>Function</b>	Cleaves collagens of types I, II, and III at one site in the helical domain. Also cleaves collagens of types VII and X (PubMed: <a href="#">1645757</a> , PubMed: <a href="#">2153297</a> , PubMed: <a href="#">2557822</a> ). In case of HIV infection, interacts and cleaves the secreted viral Tat protein, leading to a decrease in neuronal Tat's mediated neurotoxicity (PubMed: <a href="#">16807369</a> ).
<b>Cellular Location</b>	Secreted, extracellular space, extracellular matrix

## Images

---

Western blot analysis of MMP1 expression in A431 cell



lysate.

Please note: All products are 'FOR RESEARCH USE ONLY. NOT FOR USE IN DIAGNOSTIC OR THERAPEUTIC PROCEDURES'.