

LRP6 Antibody

Rabbit mAb

Catalog # AP92131

Product Information

Application	WB, IF, FC, ICC
Primary Accession	O75581
Reactivity	Rat, Human, Mouse
Clonality	Monoclonal
Other Names	LRP6;
Isotype	Rabbit IgG
Host	Rabbit
Calculated MW	180429

Additional Information

Dilution	WB 1:500~1:2000 ICC/IF 1:50~1:200 FC 1:50
Purification	Affinity-chromatography
Immunogen	A synthesized peptide derived from human LRP6
Description	Component of the Wnt-Fzd-LRP5-LRP6 complex that triggers beta-catenin signaling through inducing aggregation of receptor-ligand complexes into ribosome-sized signalsomes. Cell-surface coreceptor of Wnt/beta-catenin signaling, which plays a pivotal role in bone formation.
Storage Condition and Buffer	Rabbit IgG in phosphate buffered saline , pH 7.4, 150mM NaCl, 0.02% sodium azide and 50% glycerol. Store at +4°C short term. Store at -20°C long term. Avoid freeze / thaw cycle.

Protein Information

Name	LRP6
Function	Component of the Wnt-Fzd-LRP5-LRP6 complex that triggers beta-catenin signaling through inducing aggregation of receptor-ligand complexes into ribosome-sized signalosomes (PubMed: 11357136 , PubMed: 11448771 , PubMed: 15778503 , PubMed: 16341017 , PubMed: 16513652 , PubMed: 17326769 , PubMed: 17400545 , PubMed: 19107203 , PubMed: 19293931 , PubMed: 19801552 , PubMed: 28341812). Cell-surface coreceptor of Wnt/beta- catenin signaling, which plays a pivotal role in bone formation (PubMed: 11357136 , PubMed: 11448771 , PubMed: 15778503 , PubMed: 16341017 , PubMed: 16513652 , PubMed: 17326769 , PubMed: 17400545 , PubMed: 19107203 , PubMed: 19293931 , PubMed: 19801552 , PubMed: 28341812). The Wnt-induced Fzd/LRP6 coreceptor complex recruits DVL1 polymers to the plasma membrane which, in turn, recruits the AXIN1/GSK3B-complex to the cell surface promoting the formation of signalosomes and inhibiting AXIN1/GSK3-mediated phosphorylation and destruction of beta-catenin (PubMed: 16513652).

Required for posterior patterning of the epiblast during gastrulation (By similarity).

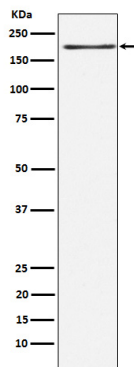
Cellular Location

Cell membrane; Single-pass type I membrane protein Endoplasmic reticulum. Membrane raft. Note=On Wnt signaling, undergoes a cycle of caveolin- or clathrin-mediated endocytosis and plasma membrane location. Released from the endoplasmic reticulum on palmitoylation Mono-ubiquitination retains it in the endoplasmic reticulum in the absence of palmitoylation. On Wnt signaling, phosphorylated, aggregates and colocalizes with AXIN1 and GSK3B at the plasma membrane in LRP6- signalosomes (By similarity). Chaperoned to the plasma membrane by HSP90B1 and MESD (PubMed:23572575). {ECO:0000250 | UniProtKB:O88572, ECO:0000269 | PubMed:23572575}

Tissue Location

Widely coexpressed with LRP5 during embryogenesis and in adult tissues

Images



Western blot analysis of LRP6 expression in Jurkat cell lysate.

Please note: All products are 'FOR RESEARCH USE ONLY. NOT FOR USE IN DIAGNOSTIC OR THERAPEUTIC PROCEDURES'.