

MARK3 Antibody

Rabbit mAb

Catalog # AP92101

Product Information

Application	WB, IF, FC, ICC, IP
Primary Accession	P27448
Reactivity	Human, Mouse
Clonality	Monoclonal
Other Names	C-TAK1; cTAK1; Emk2; KP78; Mark3; PAR1A;
Isotype	Rabbit IgG
Host	Rabbit
Calculated MW	84429

Additional Information

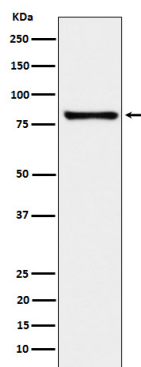
Dilution	WB 1:500~1:2000 ICC/IF 1:50~1:200 IP 1:30 FC 1:50
Purification	Affinity-chromatography
Immunogen	A synthesized peptide derived from human MARK3
Description	Involved in the specific phosphorylation of microtubule-associated proteins for tau, MAP2 and MAP4. Phosphorylates CDC25C on 'Ser-216'.
Storage Condition and Buffer	Rabbit IgG in phosphate buffered saline , pH 7.4, 150mM NaCl, 0.02% sodium azide and 50% glycerol. Store at +4°C short term. Store at -20°C long term. Avoid freeze / thaw cycle.

Protein Information

Name	MARK3
Synonyms	CTAK1, EMK2
Function	Serine/threonine-protein kinase (PubMed: 16822840 , PubMed: 16980613 , PubMed: 23666762). Involved in the specific phosphorylation of microtubule-associated proteins for MAP2 and MAP4. Phosphorylates the microtubule-associated protein MAPT/TAU (PubMed: 23666762). Phosphorylates CDC25C on 'Ser-216' (PubMed: 12941695). Regulates localization and activity of some histone deacetylases by mediating phosphorylation of HDAC7, promoting subsequent interaction between HDAC7 and 14-3-3 and export from the nucleus (PubMed: 16980613). Regulates localization and activity of MITF by mediating its phosphorylation, promoting subsequent interaction between MITF and 14-3-3 and retention in the cytosol (PubMed: 16822840). Negatively regulates the Hippo signaling pathway and antagonizes the phosphorylation of LATS1. Cooperates with DLG5 to inhibit the kinase activity of STK3/MST2 toward LATS1 (PubMed: 28087714). Phosphorylates PKP2 and KSR1 (PubMed: 12941695).

Cellular Location	Cell membrane; Peripheral membrane protein. Cell projection, dendrite. Cytoplasm
Tissue Location	Ubiquitous.

Images



Western blot analysis of MARK3 expression in K562 cell lysate.

Please note: All products are 'FOR RESEARCH USE ONLY. NOT FOR USE IN DIAGNOSTIC OR THERAPEUTIC PROCEDURES'.