

FSH beta (FSHB) Antibody

Rabbit mAb

Catalog # AP92074

Product Information

Application	WB, IP
Primary Accession	P01225
Reactivity	Human, Rabbit
Clonality	Monoclonal
Other Names	Follicle Stimulating Hormon; Follitropin beta chain; Follitropin subunit beta; FSHB; FSHbeta;
Isotype	Rabbit IgG
Host	Rabbit
Calculated MW	14700

Additional Information

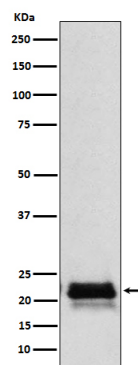
Dilution	WB 1:500~1:2000 IP 1:50
Purification	Affinity-chromatography
Immunogen	A synthesized peptide derived from human FSH beta (FSHB)
Description	Follicle stimulating hormone enables ovarian folliculogenesis to the antral follicle stage and is essential for Sertoli cell proliferation and maintenance of sperm quality in the testis.
Storage Condition and Buffer	Rabbit IgG in phosphate buffered saline , pH 7.4, 150mM NaCl, 0.02% sodium azide and 50% glycerol. Store at +4°C short term. Store at -20°C long term. Avoid freeze / thaw cycle.

Protein Information

Name	FSHB
Function	Together with the alpha chain CGA constitutes follitropin, the follicle-stimulating hormone, and provides its biological specificity to the hormone heterodimer. Binds FSHR, a G protein-coupled receptor, on target cells to activate downstream signaling pathways (PubMed: 24692546 , PubMed: 2494176). Follitropin is involved in follicle development and spermatogenesis in reproductive organs (PubMed: 407105 , PubMed: 8220432).
Cellular Location	Secreted. Note=Efficient secretion requires dimerization with CGA

Images

Western blot analysis of FSH beta (FSHB) expression in Human pituitary lysate.



Please note: All products are 'FOR RESEARCH USE ONLY. NOT FOR USE IN DIAGNOSTIC OR THERAPEUTIC PROCEDURES'.