

# CD53 Antibody

Rabbit mAb

Catalog # AP92058

## Product Information

<b>Application</b>	WB, IHC, IF, FC, ICC, IHF
<b>Primary Accession</b>	<a href="#">P19397</a>
<b>Reactivity</b>	Human
<b>Clonality</b>	Monoclonal
<b>Other Names</b>	CD53; CD53 antigen; MOX44; OX44; RATOX44; Tetraspanin25; Transmembrane glycoprotein; TSPAN25; PRO1340;
<b>Isotype</b>	Rabbit IgG
<b>Host</b>	Rabbit
<b>Calculated MW</b>	24341

## Additional Information

<b>Dilution</b>	WB 1:500~1:2000 IHC 1:50~1:200 ICC/IF 1:100~1:500 FC 1:50
<b>Purification</b>	Affinity-chromatography
<b>Immunogen</b>	A synthesized peptide derived from human CD53
<b>Description</b>	May be involved in growth regulation in hematopoietic cells.
<b>Storage Condition and Buffer</b>	Rabbit IgG in phosphate buffered saline , pH 7.4, 150mM NaCl, 0.02% sodium azide and 50% glycerol. Store at +4°C short term. Store at -20°C long term. Avoid freeze / thaw cycle.

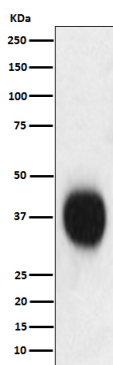
## Protein Information

<b>Name</b>	CD53
<b>Synonyms</b>	MOX44, TSPAN25
<b>Function</b>	Structural component of specialized membrane microdomains known as tetraspanin-enriched microdomains (TERMs), which act as platforms for receptor clustering and signaling (PubMed: <a href="#">28487417</a> ). Participates thereby in diverse biological functions such as cell signal transduction, adhesion, migration and protein trafficking (PubMed: <a href="#">32974937</a> , PubMed: <a href="#">35767951</a> ). Plays a role in the activation of monocytes and B-cells (PubMed: <a href="#">8335905</a> ). Acts as an essential regulator of B-cell development by promoting interleukin-7 receptor/IL7R signaling (By similarity). Also promotes, in B-cells, the BCR signaling by recruiting PKC to the plasma membrane in order to phosphorylate its substrates (PubMed: <a href="#">28487417</a> ). Plays an essential role in B- and T-cells homing to lymph nodes by stabilizing L-selectin/SELL cell surface expression (By similarity). Also mediates metabolic and inflammatory functions in hepatocytes and adipose tissue by promoting TNF-alpha and LPS signaling independent of the immune compartment (By similarity).

<b>Cellular Location</b>	Cell membrane. Cell junction {ECO:0000250 UniProtKB:Q61451}. Membrane; Multi-pass membrane protein. Synapse. Note=Concentrates in localized microdomains along the plasma membrane at the contact sites between cells of fused myotubes. {ECO:0000250 UniProtKB:Q61451}
<b>Tissue Location</b>	B-cells, monocytes, macrophages, neutrophils, single (CD4 or CD8) positive thymocytes and peripheral T-cells

## Images

---



Western blot analysis of CD53 expression in Jurkat cell lysate.

Please note: All products are 'FOR RESEARCH USE ONLY. NOT FOR USE IN DIAGNOSTIC OR THERAPEUTIC PROCEDURES'.