

Integrin alpha 9 Antibody

Rabbit mAb

Catalog # AP92037

Product Information

Application	WB, IHC
Primary Accession	Q13797
Reactivity	Rat, Human, Mouse
Clonality	Monoclonal
Other Names	Alpha RLC; ITGA4L; ITGA9; RLC;
Isotype	Rabbit IgG
Host	Rabbit
Calculated MW	114489

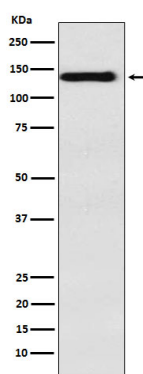
Additional Information

Dilution	WB 1:500~1:2000 IHC 1:50~1:200
Purification	Affinity-chromatography
Immunogen	A synthesized peptide derived from human Integrin alpha 9
Description	Integrin alpha-9/beta-1 is a receptor for VCAM1, cytotactin and osteopontin. It recognizes the sequence A-E-I-D-G-I-E-L in cytotactin.
Storage Condition and Buffer	Rabbit IgG in phosphate buffered saline , pH 7.4, 150mM NaCl, 0.02% sodium azide and 50% glycerol. Store at +4°C short term. Store at -20°C long term. Avoid freeze / thaw cycle.

Protein Information

Name	ITGA9
Function	Integrin alpha-9/beta-1 (ITGA9:ITGB1) is a receptor for VCAM1, cytotactin and osteopontin. It recognizes the sequence A-E-I-D- G-I-E-L in cytotactin. ITGA9:ITGB1 may play a crucial role in SVEP1/polydrom-mediated myoblast cell adhesion (By similarity). Integrin ITGA9:ITGB1 represses PRKCA-mediated L-type voltage-gated channel Ca(2+) influx and ROCK-mediated calcium sensitivity in vascular smooth muscle cells via its interaction with SVEP1, thereby inhibiting vasocontraction (PubMed: 35802072).
Cellular Location	Membrane; Single-pass type I membrane protein
Tissue Location	Expressed in vascular smooth muscle cells (at protein level) (PubMed: 35802072). Expressed in the airway epithelium (at protein level) (PubMed: 8245132).

Images



Western blot analysis of Integrin alpha 9 expression in HepG2 cell lysate.

Please note: All products are 'FOR RESEARCH USE ONLY. NOT FOR USE IN DIAGNOSTIC OR THERAPEUTIC PROCEDURES'.