

eEF1A1 Antibody

Rabbit mAb

Catalog # AP92033

Product Information

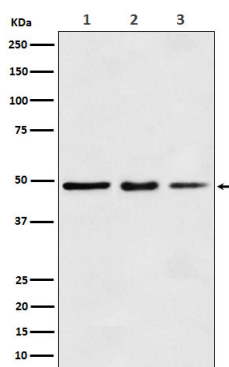
Application	WB, IHC, IF, FC, ICC, IP, IHF
Primary Accession	P68104
Reactivity	Rat, Human, Mouse
Clonality	Monoclonal
Other Names	EEF1A1; CCS-3; CCS3; EEF-1; EEF1A; EF-Tu; EF1A; GRAF-1EF; LENG7; PTI1; eEF1A-1;
Isotype	Rabbit IgG
Host	Rabbit
Calculated MW	50 KDa

Additional Information

Dilution	WB 1000~1:5000 IHC 1:50~1:200 ICC/IF 1:50~1:200 IP 1:50 FC 1:50
Purification	Affinity-chromatography
Immunogen	A synthesized peptide derived from human eEF1A1
Description	This protein promotes the GTP-dependent binding of aminoacyl-tRNA to the A-site of ribosomes during protein biosynthesis.
Storage Condition and Buffer	Rabbit IgG in phosphate buffered saline , pH 7.4, 150mM NaCl, 0.02% sodium azide and 50% glycerol. Store at +4°C short term. Store at -20°C long term. Avoid freeze / thaw cycle.

Protein Information

Images



Western blot analysis of eEF1A1 expression in (1) MCF7 cell lysate; (2) Mouse kidney lysate; (2) Rat spleen lysate.

Please note: All products are 'FOR RESEARCH USE ONLY. NOT FOR USE IN DIAGNOSTIC OR THERAPEUTIC PROCEDURES'.