

# ALDH1A2 Antibody

Rabbit mAb

Catalog # AP92029

## Product Information

<b>Application</b>	WB
<b>Primary Accession</b>	<a href="#">O94788</a>
<b>Reactivity</b>	Rat, Human, Mouse
<b>Clonality</b>	Monoclonal
<b>Other Names</b>	ALDH1A2; Aldh1a7; AV116159; RALDH 2; RALDH(II); Raldh1; RalDH2; RALDH2 T;
<b>Isotype</b>	Rabbit IgG
<b>Host</b>	Rabbit
<b>Calculated MW</b>	56724

## Additional Information

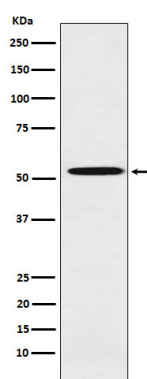
<b>Dilution</b>	WB 1:500~1:2000
<b>Purification</b>	Affinity-chromatography
<b>Immunogen</b>	A synthesized peptide derived from human ALDH1A2
<b>Description</b>	Recognizes as substrates free retinal and cellular retinol-binding protein-bound retinal. Does metabolize octanal and decanal but does not metabolize citral, benzaldehyde, acetaldehyde and propanal efficiently.
<b>Storage Condition and Buffer</b>	Rabbit IgG in phosphate buffered saline , pH 7.4, 150mM NaCl, 0.02% sodium azide and 50% glycerol. Store at +4°C short term. Store at -20°C long term. Avoid freeze / thaw cycle.

## Protein Information

<b>Name</b>	ALDH1A2
<b>Synonyms</b>	RALDH2
<b>Function</b>	Catalyzes the NAD-dependent oxidation of aldehyde substrates, such as all-trans-retinal and all-trans-13,14-dihydroretinal, to their corresponding carboxylic acids, all-trans-retinoate and all-trans- 13,14-dihydroretinoate, respectively (PubMed: <a href="#">29240402</a> , PubMed: <a href="#">33565183</a> ). Retinoate signaling is critical for the transcriptional control of many genes, for instance it is crucial for initiation of meiosis in both male and female (Probable) (PubMed: <a href="#">33565183</a> ). Recognizes retinal as substrate, both in its free form and when bound to cellular retinol-binding protein (By similarity). Can metabolize octanal and decanal, but has only very low activity with benzaldehyde, acetaldehyde and propanal (By similarity). Displays complete lack of activity with citral (By similarity).
<b>Cellular Location</b>	Cytoplasm.

## Images

---



Western blot analysis of ALDH1A2 expression in Molt4 cell lysate.

Please note: All products are 'FOR RESEARCH USE ONLY. NOT FOR USE IN DIAGNOSTIC OR THERAPEUTIC PROCEDURES'.