

Lumican Antibody

Rabbit mAb

Catalog # AP92022

Product Information

Application	WB, IHC, IF, FC, ICC, IHF
Primary Accession	P51884
Reactivity	Rat, Human, Mouse
Clonality	Monoclonal
Other Names	LDC; LUM; Lumican; SLRR2D;
Isotype	Rabbit IgG
Host	Rabbit
Calculated MW	38429

Additional Information

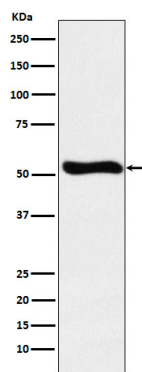
Dilution	WB 1:500~1:2000 IHC 1:50~1:200 ICC/IF 1:50~1:200 FC 1:50
Purification	Affinity-chromatography
Immunogen	A synthesized peptide derived from human Lumican
Description	Belongs to the small leucine-rich proteoglycan (SLRP) family. SLRP class II subfamily. Contains 11 LRR (leucine-rich) repeats. Contains 1 LRRNT domain.
Storage Condition and Buffer	Rabbit IgG in phosphate buffered saline , pH 7.4, 150mM NaCl, 0.02% sodium azide and 50% glycerol. Store at +4°C short term. Store at -20°C long term. Avoid freeze / thaw cycle.

Protein Information

Name	LUM
Synonyms	LDC, SLRR2D
Cellular Location	Secreted, extracellular space, extracellular matrix
Tissue Location	Cornea and other tissues.

Images

Western blot analysis of Lumican expression in Jurkat cell lysate.



Please note: All products are 'FOR RESEARCH USE ONLY. NOT FOR USE IN DIAGNOSTIC OR THERAPEUTIC PROCEDURES'.