

Guanylyl Cyclase beta 1 Antibody

Rabbit mAb

Catalog # AP92018

Product Information

Application	WB, IHC
Primary Accession	Q02153
Reactivity	Rat, Human, Mouse
Clonality	Monoclonal
Other Names	GCBeta1; GCS beta 1; GCS beta 3; GUC1B3; GUCSB3; GUCY1B1; Gucy1b1; GUCY1B3; SGC;
Isotype	Rabbit IgG
Host	Rabbit
Calculated MW	70514

Additional Information

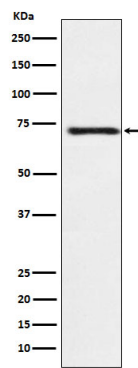
Dilution	WB 1:500~1:2000 IHC 1:50~1:200
Purification	Affinity-chromatography
Immunogen	A synthesized peptide derived from human Guanylyl Cyclase beta 1
Description	Mediates responses to nitric oxide (NO) by catalyzing the biosynthesis of the signaling molecule cGMP.
Storage Condition and Buffer	Rabbit IgG in phosphate buffered saline , pH 7.4, 150mM NaCl, 0.02% sodium azide and 50% glycerol. Store at +4°C short term. Store at -20°C long term. Avoid freeze / thaw cycle.

Protein Information

Name	GUCY1B1 (HGNC:4687)
Function	Mediates responses to nitric oxide (NO) by catalyzing the biosynthesis of the signaling molecule cGMP.
Cellular Location	Cytoplasm {ECO:0000250 UniProtKB:P16068}.
Tissue Location	Detected in brain cortex and cerebellum (at protein level).

Images

Western blot analysis of Guanylyl Cyclase beta 1 expression in Human fetal brain lysate.



Please note: All products are 'FOR RESEARCH USE ONLY. NOT FOR USE IN DIAGNOSTIC OR THERAPEUTIC PROCEDURES'.