

E2F4 Antibody

Rabbit mAb

Catalog # AP92003

Product Information

Application	WB, IHC, IF, FC, ICC, IHF
Primary Accession	Q16254
Reactivity	Human
Clonality	Monoclonal
Other Names	E2F 4; E2F transcription factor 4; E2F transcription factor 4 p107/p130 binding; E2F4;
Isotype	Rabbit IgG
Host	Rabbit
Calculated MW	43960

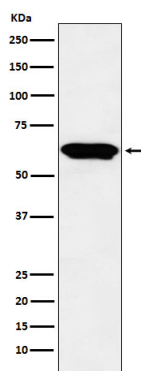
Additional Information

Dilution	WB 1:500~1:2000 IHC 1:50~1:200 ICC/IF 1:50~1:200 FC 1:50
Purification	Affinity-chromatography
Immunogen	A synthesized peptide derived from human E2F4
Description	Transcription activator that binds DNA cooperatively with DP proteins through the E2 recognition site, 5'-TTTC[CG]CGC-3' found in the promoter region of a number of genes whose products are involved in cell cycle regulation or in DNA replication.
Storage Condition and Buffer	Rabbit IgG in phosphate buffered saline , pH 7.4, 150mM NaCl, 0.02% sodium azide and 50% glycerol. Store at +4°C short term. Store at -20°C long term. Avoid freeze / thaw cycle.

Protein Information

Name	E2F4
Function	Transcription activator that binds DNA cooperatively with DP proteins through the E2 recognition site, 5'-TTTC[CG]CGC-3' found in the promoter region of a number of genes whose products are involved in cell cycle regulation or in DNA replication. The DRTF1/E2F complex functions in the control of cell-cycle progression from G1 to S phase. E2F4 binds with high affinity to RBL1 and RBL2. In some instances can also bind RB1. Specifically required for multiciliate cell differentiation; together with MCIDAS and E2F5, binds and activate genes required for centriole biogenesis.
Cellular Location	Nucleus.
Tissue Location	Found in all tissue examined including heart, brain, placenta, lung, liver, skeletal muscle, kidney and pancreas

Images



Western blot analysis of E2F4 expression in Raji cell lysate.

Please note: All products are 'FOR RESEARCH USE ONLY. NOT FOR USE IN DIAGNOSTIC OR THERAPEUTIC PROCEDURES'.