

Laminin gamma 1 Antibody

Rabbit mAb

Catalog # AP92002

Product Information

Application	WB, FC
Primary Accession	P11047/Q5VYE7/Q6NVY8
Reactivity	Human
Clonality	Monoclonal
Other Names	LAMB2; lamc1; Laminin B2 chain; Laminin subunit gamma-1; Laminin-1 subunit gamma; Laminin-10 subunit gamma; Laminin-11 subunit gamma; Laminin-2 subunit gamma; Laminin-3 subunit gamma; Laminin-4 subunit gamma; Laminin-6 subunit gamma; Laminin-7 subunit gamma; Laminin-8 subunit gamma; Laminin-9 subunit gamma;
Isotype	Rabbit IgG
Host	Rabbit
Calculated MW	200 KDa

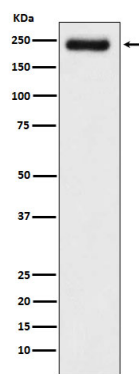
Additional Information

Dilution	WB 1:500~1:2000 FC 1:50
Purification	Affinity-chromatography
Immunogen	A synthesized peptide derived from human Laminin gamma 1
Description	Binding to cells via a high affinity receptor, laminin is thought to mediate the attachment, migration and organization of cells into tissues during embryonic development by interacting with other extracellular matrix components.
Storage Condition and Buffer	Rabbit IgG in phosphate buffered saline , pH 7.4, 150mM NaCl, 0.02% sodium azide and 50% glycerol. Store at +4°C short term. Store at -20°C long term. Avoid freeze / thaw cycle.

Protein Information

Images

Western blot analysis of Laminin gamma 1 expression in A431 cell lysate.



Please note: All products are 'FOR RESEARCH USE ONLY. NOT FOR USE IN DIAGNOSTIC OR THERAPEUTIC PROCEDURES'.