

# FCGR1B Antibody (C-term)

Affinity Purified Rabbit Polyclonal Antibody (Pab)

Catalog # AP9197B

## Product Information

---

|                          |   |
|--------------------------|---|
| <b>Application</b>       | WB, FC, IHC-P-Leica, E                          |
| <b>Primary Accession</b> | <a href="#">Q92637</a>                          |
| <b>Other Accession</b>   | <a href="#">A6NKC4</a> , <a href="#">P12314</a> |
| <b>Reactivity</b>        | Human   |
| <b>Host</b>              | Rabbit  |
| <b>Clonality</b>         | Polyclonal                                      |
| <b>Isotype</b>           | Rabbit IgG                                      |
| <b>Clone Names</b>       | RB23915   |
| <b>Calculated MW</b>     | 32232   |
| <b>Antigen Region</b>    | 248-276   |

## Additional Information

---

|                           |  |
|---------------------------|--|
| <b>Other Names</b>        | High affinity immunoglobulin gamma Fc receptor IB, IgG Fc receptor IB, Fc-gamma RIB, FcRIB, hFcgammaRIB, FCGR1B, IGFRB   |
| <b>Target/Specificity</b> | This FCGR1B antibody is generated from rabbits immunized with a KLH conjugated synthetic peptide between 248-276 amino acids from the C-terminal region of human FCGR1B.     |
| <b>Dilution</b>           | WB~~1:1000 FC~~1:10~50 IHC-P-Leica~~1:100 E~~Use at an assay dependent concentration.  |
| <b>Format</b>             | Purified polyclonal antibody supplied in PBS with 0.09% (W/V) sodium azide. This antibody is purified through a protein A column, followed by peptide affinity purification. |
| <b>Storage</b>            | Maintain refrigerated at 2-8°C for up to 2 weeks. For long term storage store at -20°C in small aliquots to prevent freeze-thaw cycles.                                      |
| <b>Precautions</b>        | FCGR1B Antibody (C-term) is for research use only and not for use in diagnostic or therapeutic procedures.   |

## Protein Information

---

|                 |   |
|-----------------|---|
| <b>Name</b>     | FCGR1BP ( <a href="#">HGNC:3614</a> )   |
| <b>Synonyms</b> | FCGR1B, IGFRB   |
| <b>Function</b> | May bind to the Fc region of immunoglobulins gamma with a low affinity compared to FCGR1A. May function in the humoral immune response. |

## Background

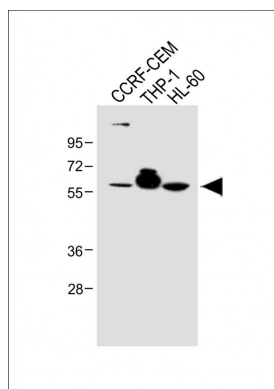
FCGR1B may bind to the Fc region of immunoglobulins gamma with a low affinity compared to FCGR1A. This protein may function in the humoral immune response.

## References

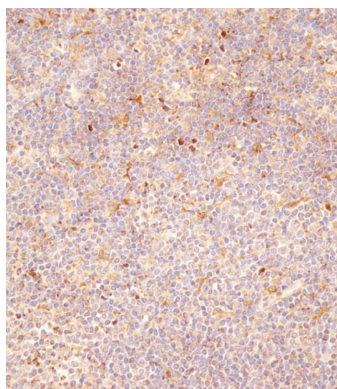
Thomas,G., et.al., Nat. Genet. 41 (5), 579-584 (2009)

Kuwano,Y., et.al., Arch. Dermatol. Res. 298 (10), 493-498 (2007)

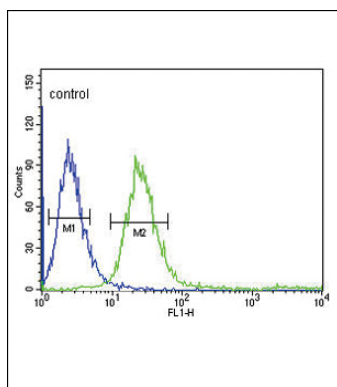
## Images



All lanes : Anti-FCGR1B Antibody (C-term) at 1:500 dilution Lane 1: CCRF-CEM whole cell lysate Lane 2: THP-1 whole cell lysate Lane 3: HL-60 whole cell lysate Lysates/proteins at 20 µg per lane. Secondary Goat Anti-Rabbit IgG, (H+L), Peroxidase conjugated at 1/10000 dilution. Predicted band size : 33 kDa Blocking/Dilution buffer: 5% NFDM/TBST.



Immunohistochemical analysis of AP9197b on paraffin-embedded human tonsil tissue was performed on the Leica® BOND RXm. Tissue was fixed with formaldehyde at room temperature. Heat induced epitope retrieval was performed by EDTA buffer (pH9. 0). Samples were incubated with primary antibody(1:100) for 15min at room temperature. Leica Bond Polymer Refine Detection was used as the secondary antibody.



FCGR1B Antibody (C-term) (Cat. #AP9197b) flow cytometric analysis of CEM cells (right histogram) compared to a negative control cell (left histogram).FITC-conjugated goat-anti-rabbit secondary antibodies were used for the analysis.