

# MSMB Antibody

Rabbit mAb

Catalog # AP91977

## Product Information

---

<b>Application</b>	WB, IHC, IP
<b>Primary Accession</b>	<a href="#">P08118</a>
<b>Reactivity</b>	Human
<b>Clonality</b>	Monoclonal
<b>Other Names</b>	MSP; PSP; IGBF; MSPB; PN44; PRPS; HPC13; PSP57; PSP94; PSP-94;
<b>Isotype</b>	Rabbit IgG
<b>Host</b>	Rabbit
<b>Calculated MW</b>	12865

## Additional Information

---

<b>Dilution</b>	WB 1:1000~1:5000 IHC 1:100~1:500 IP 1:50
<b>Purification</b>	Affinity-chromatography
<b>Immunogen</b>	A synthesized peptide derived from human Prostate Secretory Protein/PSP
<b>Description</b>	Specific receptors for this protein are found on spermatozoa and in the prostate.
<b>Storage Condition and Buffer</b>	Rabbit IgG in phosphate buffered saline , pH 7.4, 150mM NaCl, 0.02% sodium azide and 50% glycerol. Store at +4°C short term. Store at -20°C long term. Avoid freeze / thaw cycle.

## Protein Information

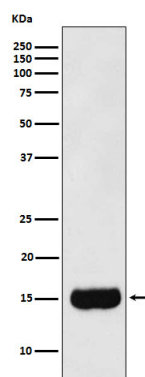
---

<b>Name</b>	MSMB
<b>Synonyms</b>	PRSP
<b>Cellular Location</b>	Secreted. Note=Sperm surface.
<b>Tissue Location</b>	Strongly expressed in prostate, liver, kidney, breast and penis. Also expressed in pancreas, esophagus, stomach, deodenum, colon, trachea, lung, salivary glands and fallopian tube PSP94 is expressed in lung and breast, whereas PSP57 is found in kidney and bladder.

## Images

---

Western blot analysis of Prostate Secretory Protein/PSP expression in Human prostate cancer lysate.



Please note: All products are 'FOR RESEARCH USE ONLY. NOT FOR USE IN DIAGNOSTIC OR THERAPEUTIC PROCEDURES'.