

LY75 Antibody

Rabbit mAb

Catalog # AP91915

Product Information

Application	WB, IHC, IF, ICC, IP, IHF
Primary Accession	O60449
Reactivity	Human, Mouse
Clonality	Monoclonal
Other Names	CD205; CLEC13B; DEC-205; gp200-MR6; Ly-75; LY75;
Isotype	Rabbit IgG
Host	Rabbit
Calculated MW	198311

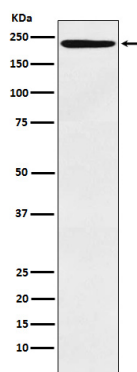
Additional Information

Dilution	WB 1:500~1:2000 IHC 1:50~1:200 ICC/IF 1:50~1:200 IP 1:50
Purification	Affinity-chromatography
Immunogen	A synthesized peptide derived from human LY75
Description	Acts as an endocytic receptor to direct captured antigens from the extracellular space to a specialized antigen-processing compartment (By similarity). Causes reduced proliferation of B-lymphocytes.
Storage Condition and Buffer	Rabbit IgG in phosphate buffered saline , pH 7.4, 150mM NaCl, 0.02% sodium azide and 50% glycerol. Store at +4°C short term. Store at -20°C long term. Avoid freeze / thaw cycle.

Protein Information

Name	LY75
Synonyms	CD205, CLEC13B
Function	Acts as an endocytic receptor to direct captured antigens from the extracellular space to a specialized antigen-processing compartment (By similarity). Causes reduced proliferation of B- lymphocytes.
Cellular Location	Membrane; Single-pass type I membrane protein
Tissue Location	Expressed in spleen, thymus, colon and peripheral blood lymphocytes. Detected in myeloid and B-lymphoid cell lines Isoform 2 and isoform 3 are expressed in malignant Hodgkin lymphoma cells called Hodgkin and Reed-Sternberg (HRS) cells

Images



Western blot analysis of LY75 expression in Human tonsil lysate.

Please note: All products are 'FOR RESEARCH USE ONLY. NOT FOR USE IN DIAGNOSTIC OR THERAPEUTIC PROCEDURES'.