

Cathepsin S Antibody

Rabbit mAb

Catalog # AP91909

Product Information

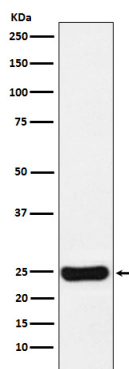
Application	WB, IHC, IF, ICC, IHF
Primary Accession	P25774
Reactivity	Human
Clonality	Monoclonal
Other Names	CTSS; Cathepsin S; Cat-s; CATS;
Isotype	Rabbit IgG
Host	Rabbit
Calculated MW	25 KDa

Additional Information

Dilution	WB 1:500~1:2000 IHC 1:50~1:200 ICC/IF 1:50~1:200
Purification	Affinity-chromatography
Immunogen	A synthesized peptide derived from human Cathepsin S
Description	Thiol protease. Key protease responsible for the removal of the invariant chain from MHC class II molecules. The bond-specificity of this proteinase is in part similar to the specificities of cathepsin L and cathepsin N.
Storage Condition and Buffer	Rabbit IgG in phosphate buffered saline , pH 7.4, 150mM NaCl, 0.02% sodium azide and 50% glycerol. Store at +4°C short term. Store at -20°C long term. Avoid freeze / thaw cycle.

Protein Information

Images



Western blot analysis of Cathepsin S expression in U87-MG cell lysate.

Please note: All products are 'FOR RESEARCH USE ONLY. NOT FOR USE IN DIAGNOSTIC OR THERAPEUTIC PROCEDURES'.