

IKBKE Antibody

Rabbit mAb

Catalog # AP91906

Product Information

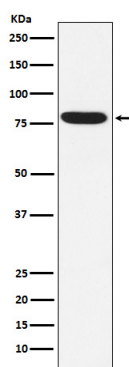
Application	WB, IHC, IF, FC, ICC, IHF
Primary Accession	Q14164
Reactivity	Human
Clonality	Monoclonal
Other Names	IKBKE; IKK-E; IKK-i; IKKE; IKKI; IKKi/IKKe;
Isotype	Rabbit IgG
Host	Rabbit
Calculated MW	80 KDa

Additional Information

Dilution	WB 1:1000~1:5000 IHC 1:50~1:200 ICC/IF 1:50~1:200 FC 1:50
Purification	Affinity-chromatography
Immunogen	A synthesized peptide derived from human IKKi/IKKe
Description	Phosphorylates inhibitors of NF-kappa-B thus leading to the dissociation of the inhibitor/NF-kappa-B complex and ultimately the degradation of the inhibitor. May play a special role in the immune response. Protects cells against DNA damage-induced cell death.
Storage Condition and Buffer	Rabbit IgG in phosphate buffered saline , pH 7.4, 150mM NaCl, 0.02% sodium azide and 50% glycerol. Store at +4°C short term. Store at -20°C long term. Avoid freeze / thaw cycle.

Protein Information

Images



Western blot analysis of IKKi/IKKe expression in Raji cell lysate.

Please note: All products are 'FOR RESEARCH USE ONLY. NOT FOR USE IN DIAGNOSTIC OR THERAPEUTIC PROCEDURES'.