

HSP10 Antibody

Rabbit mAb

Catalog # AP91896

Product Information

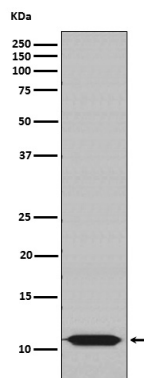
Application	WB, IHC, IF, ICC, IP, IHF
Primary Accession	P61604
Reactivity	Rat, Human, Mouse
Clonality	Monoclonal
Other Names	Chaperonin 10; CPN10; EPF; GROES; Hsp10; Hspe1;
Isotype	Rabbit IgG
Host	Rabbit
Calculated MW	11 KDa

Additional Information

Dilution	WB 1:1000~1:5000 IHC 1:50~1:200 ICC/IF 1:50~1:200 IP 1:50
Purification	Affinity-chromatography
Immunogen	A synthesized peptide derived from human HSP10
Description	Eukaryotic HSP10 homolog which is essential for mitochondrial protein biogenesis, together with CPN60. Binds to CPN60 in the presence of Mg-ATP and suppresses the ATPase activity of the latter.
Storage Condition and Buffer	Rabbit IgG in phosphate buffered saline , pH 7.4, 150mM NaCl, 0.02% sodium azide and 50% glycerol. Store at +4°C short term. Store at -20°C long term. Avoid freeze / thaw cycle.

Protein Information

Images



Western blot analysis of HSP10 expression in A431 cell lysate.

Please note: All products are 'FOR RESEARCH USE ONLY. NOT FOR USE IN DIAGNOSTIC OR THERAPEUTIC PROCEDURES'.