

Alcohol Dehydrogenase Antibody

Rabbit mAb

Catalog # AP91893

Product Information

Application	WB, IHC, IF, ICC, IHF
Primary Accession	P07327
Reactivity	Rat, Human, Mouse
Clonality	Monoclonal
Other Names	ADH; ADH1; ADH1A; Aldehyde reductase;
Isotype	Rabbit IgG
Host	Rabbit
Calculated MW	39859

Additional Information

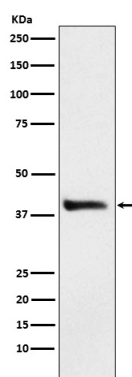
Dilution	WB 1:500~1:2000 IHC 1:50~1:200 ICC/IF 1:100~1:500
Purification	Affinity-chromatography
Immunogen	A synthesized peptide derived from human Alcohol Dehydrogenase
Description	Belongs to the zinc-containing alcohol dehydrogenase family.
Storage Condition and Buffer	Rabbit IgG in phosphate buffered saline , pH 7.4, 150mM NaCl, 0.02% sodium azide and 50% glycerol. Store at +4°C short term. Store at -20°C long term. Avoid freeze / thaw cycle.

Protein Information

Name	ADH1A
Synonyms	ADH1
Function	Alcohol dehydrogenase (PubMed: 2738060). Oxidizes primary as well as secondary alcohols. Ethanol is a very poor substrate (PubMed: 2738060).
Cellular Location	Cytoplasm.

Images

Western blot analysis of Alcohol Dehydrogenase expression in HepG2 cell lysate.



Please note: All products are 'FOR RESEARCH USE ONLY. NOT FOR USE IN DIAGNOSTIC OR THERAPEUTIC PROCEDURES'.