

P2Y6 Antibody

Rabbit mAb

Catalog # AP91871

Product Information

Application	WB, IHC, IF, ICC, IP, IHF
Primary Accession	Q15077
Reactivity	Human
Clonality	Monoclonal
Other Names	P2ry6; P2Y6; P2Y6 receptor; PP2891;
Isotype	Rabbit IgG
Host	Rabbit
Calculated MW	36429

Additional Information

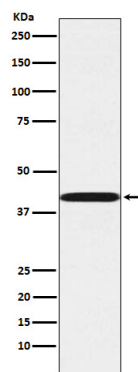
Dilution	WB 1:1000~1:5000 IHC 1:50~1:200 ICC/IF 1:50~1:200 IP 1:50
Purification	Affinity-chromatography
Immunogen	A synthesized peptide derived from human P2Y6
Description	Receptor for extracellular UDP > UTP > ATP. The activity of this receptor is mediated by G proteins which activate a phosphatidylinositol-calcium second messenger system.
Storage Condition and Buffer	Rabbit IgG in phosphate buffered saline , pH 7.4, 150mM NaCl, 0.02% sodium azide and 50% glycerol. Store at +4°C short term. Store at -20°C long term. Avoid freeze / thaw cycle.

Protein Information

Name	P2RY6
Function	Receptor for extracellular UDP > UTP > ATP. The activity of this receptor is mediated by G proteins which activate a phosphatidylinositol-calcium second messenger system.
Cellular Location	Cell membrane; Multi-pass membrane protein.

Images

Western blot analysis of P2Y6 expression in A549 cell lysate.



Please note: All products are 'FOR RESEARCH USE ONLY. NOT FOR USE IN DIAGNOSTIC OR THERAPEUTIC PROCEDURES'.